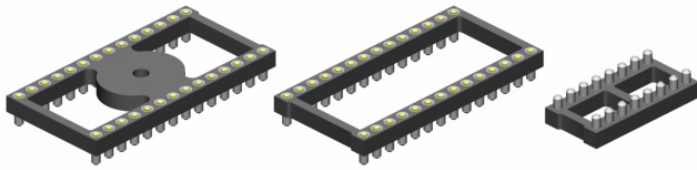
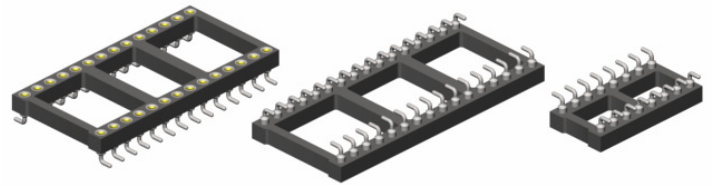


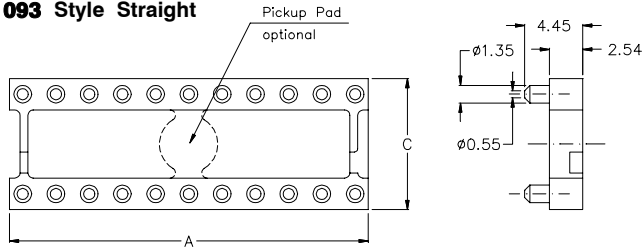
Straight Terminal SMT Sockets - 093 Style -



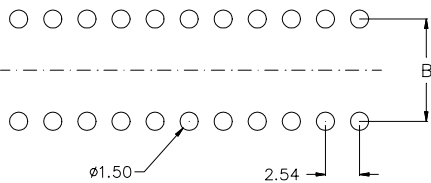
Gullwing Terminal SMT Sockets - 094 & R94 Style -



093 Style Straight



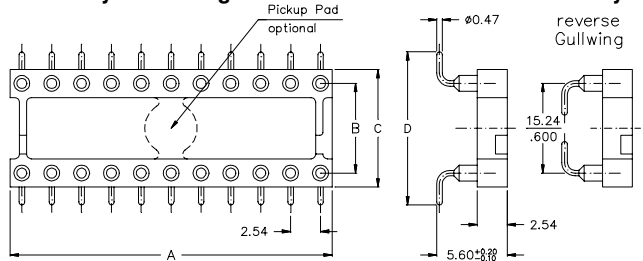
PCB layout



Dimensions (mm/inch)

Pin	Dimensions (mm/inch)			Ordering Code
	"A"	"B"	"C"	
6	7,62/.300	7,62	10,16	PSO-306-H093-95
8	10,16/.400			PSO-308-H093-95
10	12,70/.500			PSO-310-H093-95
14	17,78/.700			PSO-314-H093-95
16	20,32/.800			PSO-316-H093-95
18	22,86/.900			PSO-318-H093-95
20	25,40/1.000	15,24	17,78	PSO-320-H093-95
24	30,48/1.200			PSO-624-H093-95
28	35,56/1.400			PSO-628-H093-95
32	40,64/1.600			PSO-632-H093-95
36	45,72/1.800			PSO-636-H093-95
40	50,80/2.000			PSO-640-H093-95
48	60,96/2.400			PSO-648-H093-95

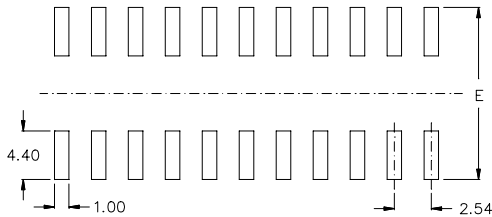
094 Style Gullwing



R94 Style

reverse Gullwing

PCB layout



Dimensions (mm/inch)

Pin	Dimensions (mm/inch)					Ordering Code
	"A"	"B"	"C"	"D"	"E"	
6	7,62/.300	7,62	10,16	13,00	15,00	PSO-306-H094-95
8	10,16/.400					PSO-308-H094-95
10	12,70/.500					PSO-310-H094-95
14	17,78/.700					PSO-314-H094-95
16	20,32/.800					PSO-316-H094-95
18	22,86/.900					PSO-318-H094-95
20	25,40/1.000	15,24	17,78	20,70	22,70	PSO-320-H094-95
24	30,48/1.200					PSO-624-Hxxx-95
28	35,56/1.400					PSO-628-Hxxx-95
32	40,64/1.600					PSO-632-Hxxx-95
40	50,80/2.000					PSO-640-Hxxx-95

Body types

Standard = Open frame (PSO Series)
 Optional = Closed frame (PSC Series)

Insulator

high-temp plastic UL 94 V-0 (RoHS compliant)
 For further technical data refer to page 64

Temperature

Operating temp. -55 °C to +125 °C
 Processing temp. +250 °C +/-5 °C for 20~40sec.

How to order

PSO - x xx - H xxx - 95 (/P)

if with Pickup Pad only 28- & 32-pin -others on request-

Series

PSO = open frame
PSC = closed frame
 please contact sales office for more details

DIP spacing

in inch
 see table, Dim "B"
 Example: **3** for ".300"

Nbr of contacts

see table
 Example: **06** for 6 Pin

Terminal styles

093 = straight
933 = floating straight
094 = gullwing
R94 = reverse gullwing

Plating

- 95 = tin/gold (tin leadfree)
 others on request

General Specifications for Precision Pin Sockets

Mechanical data

Average forces for available clip types:	
Standard type	1.80N insertion / 0.90N extraction
Low force type	0.70N insertion / 0.25N extraction
Super low force type	0.40N insertion / 0.15N extraction
High force type	4.00N insertion / 2.50N extraction
„Jumbo“ contact	1.40N insertion / 0.25N extraction
Other clips and forces available on request	
Contact life	min. 100 cycles
Solder ability	exceeds MIL-STD-202 Method 208

Moisture sensitivity	Level 1 according to JEDEC J-STD-020C
PBT, Nylon, PCT, SPS, PPS, LCP & Epoxy FR4	If necessary pls. contact E-tec for Material specification.

Operating temperature (standard)	-55°C to +125°C
---	-----------------

Processing temperature

High temp injection molded insulator	+250°C +0/-5°C for 20~40 sec.
Epoxy FR4 (Standard)	+220°C min. for 10 sec.
Epoxy FR4 (hi temp)	+260°C min. for 60 sec.

Electrical data

Contact resistance at 1A	4,3 mΩ typ.
Current rating (except „Jumbo“ contact)	1A max.
„Jumbo“ contact	3A max.
Contact capacitance at 1MHz	2pF max.
Insulation resistance at 500V DC for std & hi-temp	5 × 10 ⁹ Ω min.
Insulation resistance at 500V DC for FR4 Epoxy	> 10 ⁴ MΩ
Breakdown voltage at 60 Hz	500 V AC min.
Contact resistance after 1000 ins./ext. cycles	≤ 7 mΩ

Material (RoHS compliant)

Standard temperature plastic: PBT	UL 94 V-0
High-temp plastic: Nylon, PCT, SPS, PPS, LCP	UL 94 V-0

Epoxy FR4:	UL 94 V-0 & UL 94 V-1
Terminal:	CuZn
Contact:	BeCu

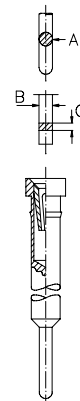
Belongs to page:

27, 28, 29, 30, 31, 33, 36, 37, 38, 39, 40, 42
7, 8, 10, 11, 12, 13, 14, 17, 18, 19, 20, 21, 22, 23, 24, 25, 26, 27, 28, 29, 34, 35, 36, 38, 39, 40, 41, 46, 47, 48, 49, 50, 51, 52, 53, 54, 55, 56, 57, 58
7, 8, 10, 11, 12, 13, 14, 15, 16, 17, 18, 19, 20, 32, 35, 37, 42

Male pin dimensions for standard clip (except „Jumbo Contact“)

(DIN 41 870, IEC 191 for square IC-legs)

DIM	min.	max.
„A“ ∅	0,42 .016"	0,56 .022"
„B“ □	0,36 .014"	0,55 .023"
„C“ □	0,20 .008"	0,30 .014"



General information concerning the E-tec interconnect products

Plating:

Standard tin plating:
min. 4,00µm Sn (*leadfree*) over min. 1,30µm Ni

Standard gold plating:
flash, max. 0,10µm Au over min. 1,30µm Ni

Higher gold platings are offered on request

Specifications:

The data contained in this catalog is of general nature and refers to standard products.

For example a „Current rating“ at an ambient temperature of 25° C reflects the value per individual contact. Should you require any further data or test reports, you can obtain this information from your nearest E-tec sales office.

The E-tec connectors conform with signal integrity requirements at high data and frequency rates. However we cannot offer a general information about the max. frequency or data transmission rate. For such a statement, it would require more information about the chosen configuration and pin-out, the length of the cable and/or any other specific requirements regarding the application itself and its related signal integrity.

E-tec SMT connectors, male or female, are offered with a coplanarity of max. 0,10mm. They are adapted to all modern SMT soldering processes and they can be handled easily with all currently existing placing techniques. Customers may choose between various packaging options, such as tray, tube and tape & reel.

GENERAL POLICY

All information contained in this catalog, including illustrations, specifications and dimensions are accurate to the best of our knowledge, and reflect the status as at the date of publication. Due to technical progress, it is subject to change without notice. Application information is informational in nature and shall not be construed to warrant suitability of products for any particular purpose as performance may vary depending on the conditions to which a product is subjected. Unless otherwise confirmed at the time of order, all E-tec products are non cancellable and non returnable items (NCNR). E-tec products are warranted for 30 days and the warranty is limited strictly to replacement of products. This warranty does not cover any claims for natural wear and tear, nor for any compensations, such as loss of production, loss of use, loss of orders, loss of profit, nor any other direct or indirect damages.