

Rev.	Remark	Date	Name

SPECIFICATION

Current Rate: 5 A
 Insulation Resistance: 5000 MΩ min.
 Contact Resistance: 10mΩ max.
 Dielectric voltage: 300V AC rms 50Hz
 Operation Temperature: -55°C to +85°C
 Salt Spray: 48 Hours
 Waterproof Rate: IP 67 Minimum

MECHANICAL CHARACTERISTICS:

Contact Insertion Force: 339g/Pin max.
 Contact Separation Force: 40g/Pin min.

MATERIAL

Contact Pin: Brass
 Insulation: PBT UL 94V-0 or Hi-Temp Plastic, request MOQ.
 Shell: Steel

PLATING

Contact: Gold flash over Nickel
 Shell: Nickel



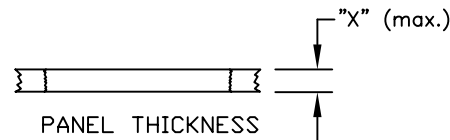
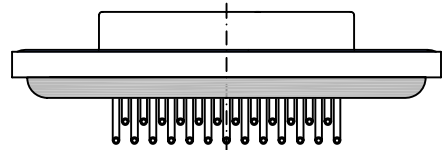
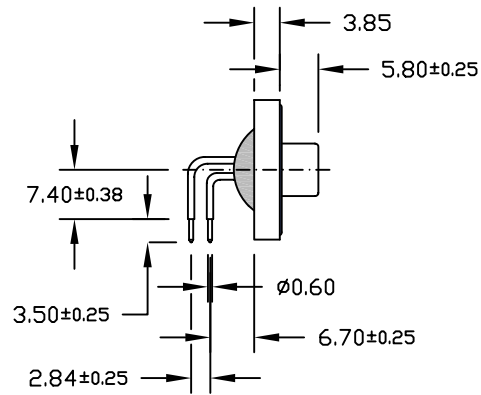
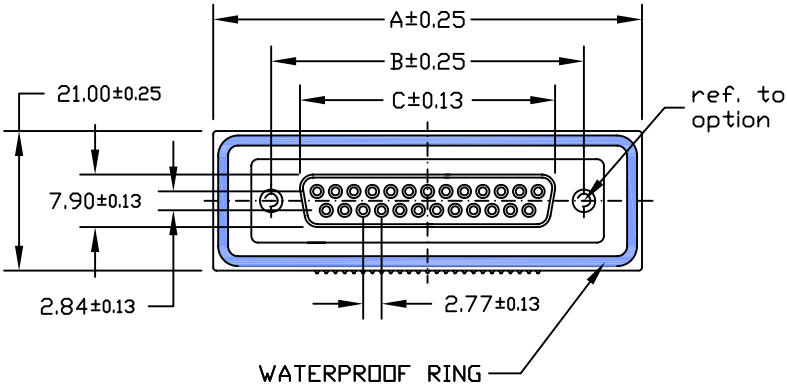
Order Code

SDF-xxx-NIP7-55/XxXX

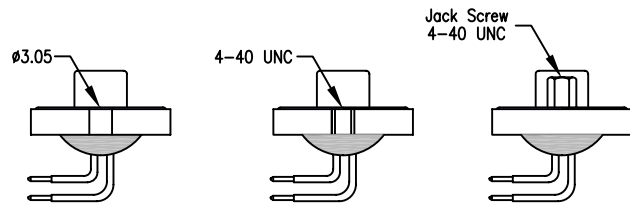
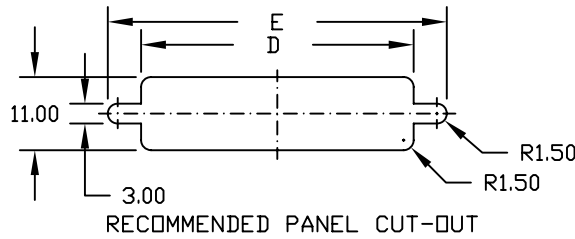
No. of contact

Plating

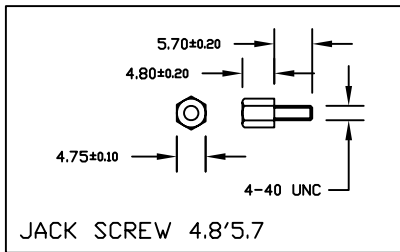
Option



Screw "L" = 5.7 for Panel thickness "X" between 1.2~2.0mm



Option: /L2 /L2T /L2TJ



No. of contact	Dimensions				
	A	B	C	D	E
009	39.40	24.99	16.33	20.00	28.20
015	47.70	33.30	24.66	28.00	36.50
025	64.50	47.04	38.38	41.50	51.00



GENERAL TOLERANCE
as per
DIN 7168-m

SCALE 1=1
UNIT mm
SIZE A4

DRAWN RH
CHECK GH
APPROVE GH

DATE 10.11.06
DATE 10.11.06
DATE 10.11.06

DWG. NO. WDBR-FXX-L
PART NO. SDF-xxx-NIP7-55/XxXX

WATERPROOF
D-Sub "Female"
Right Angle Type
w/o Brackets

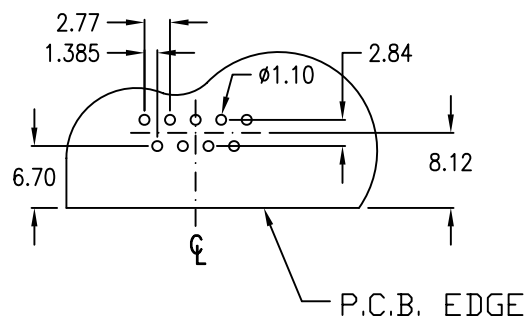
REV.
SHEET 1/2

Rev.	Remark	Date	Name

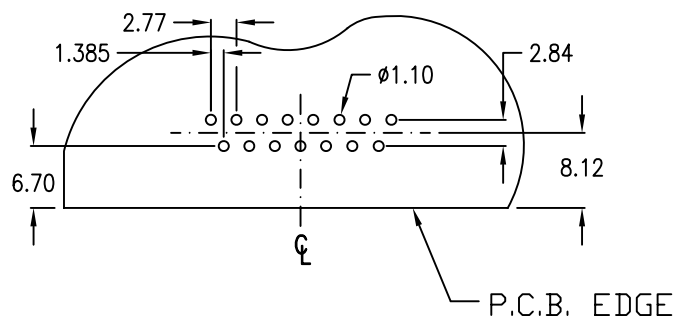
RECOMMENDED P.C.B. LAYOUT

Female

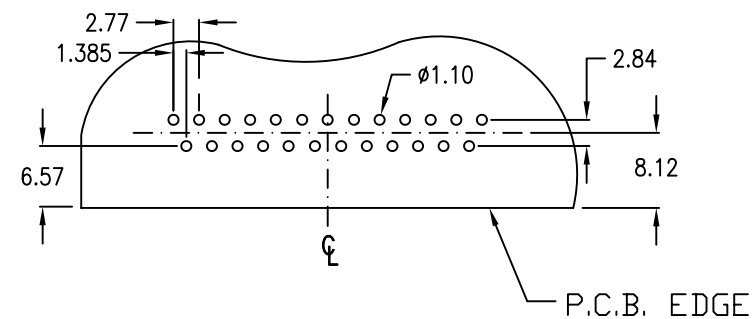
9-contact



15-contact



25-contact



GENERAL TOLERANCE
as per
DIN 7168-m

SCALE 1=1
UNIT mm
SIZE A4

DRAWN RH
CHECK GH
APPROVE GH

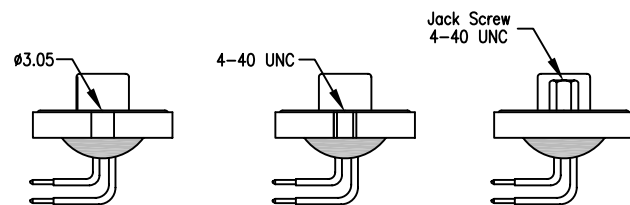
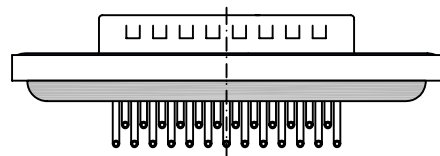
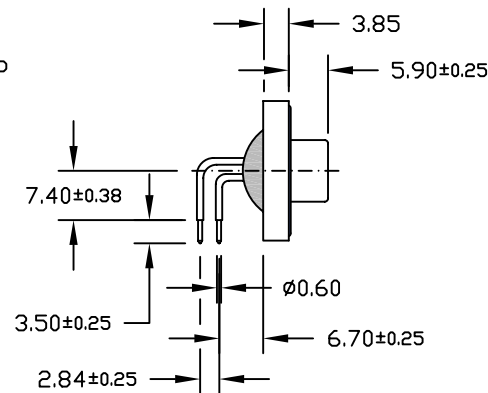
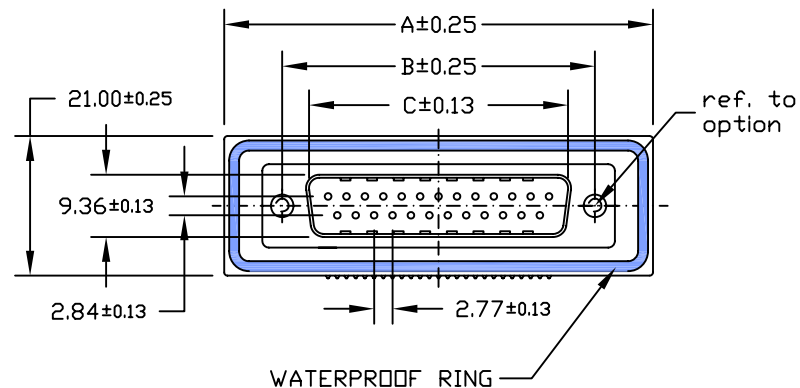
DATE 14.11.06
DATE 20.11.06
DATE 20.11.06

DWG. NO.
WDBR-FXX-L/F
FOR PART NO.
SDF-xxx-FIP7-55/Xxxx

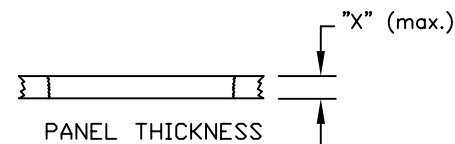
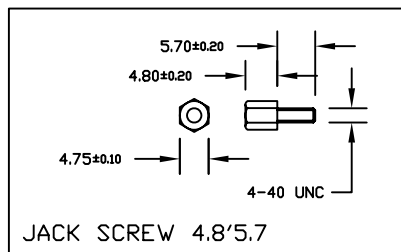
P.C.B. Hole Layout for
WATERPROOF
D-Sub "Female"
Right Angle Type w/o Brackets

REV.
SHEET
2/2

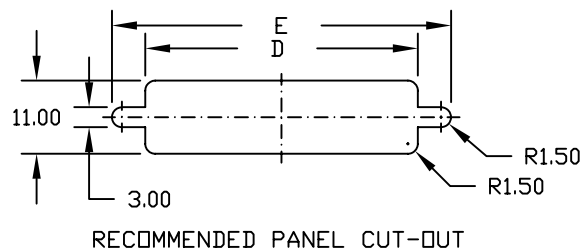
Rev.	Remark	Date	Name



Option: /L2 /L2T /L2TJ



Screw "L" = 5.7 for Panel thickness "X" between 1.2~2.0mm



SPECIFICATION

Current Rate: 5 A
 Insulation Resistance: 5000 MΩ min.
 Contact Resistance: 10mΩ max.
 Dielectric voltage: 300V AC rms 50Hz
 Operation Temperature: -55°C to +85°C
 Salt Spray: 48 Hours
 Waterproof Rate: IP 67 Minimum

MECHANICAL CHARACTERISTICS:

Contact Insertion Force: 339g/Pin max.
 Contact Separation Force: 40g/Pin min.

MATERIAL

Contact Pin: Brass
 Insulation: PBT UL 94V-0 or Hi-Temp Plastic, request MOQ.
 Shell: Steel

PLATING

Contact: Gold flash over Nickel
 Shell: Nickel



Order Code

SDM-xxx-NIP7-55/XxXX

No. of contact

Plating

Option

No. of contact	Dimensions				
	A	B	C	D	E
009	39.40	24.99	16.92	20.00	28.20
015	47.70	33.30	25.25	28.00	36.50
025	64.50	47.04	38.95	41.50	51.00



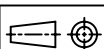
GENERAL TOLERANCE

as per
DIN 7168-m

SCALE 1=1

UNIT mm

SIZE A4



DRAWN RH

CHECK GH

APPROVE GH

DATE 10.11.06

DATE 10.11.06

DATE 10.11.06

DWG. NO.

WDBR-MXX-L

PART NO.

SDM-xxx-NIP7-xx/XxXX

WATERPROOF
D-Sub "Male"
Right Angle Type
w/o Brackets

REV.

SHEET

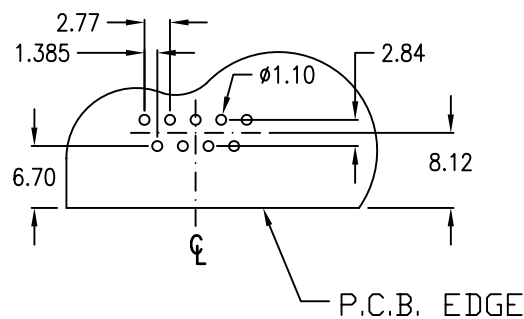
1/2

Rev.	Remark	Date	Name

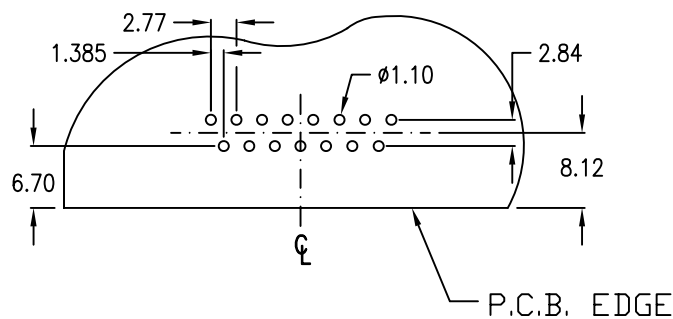
RECOMMENDED P.C.B. LAYOUT

Male

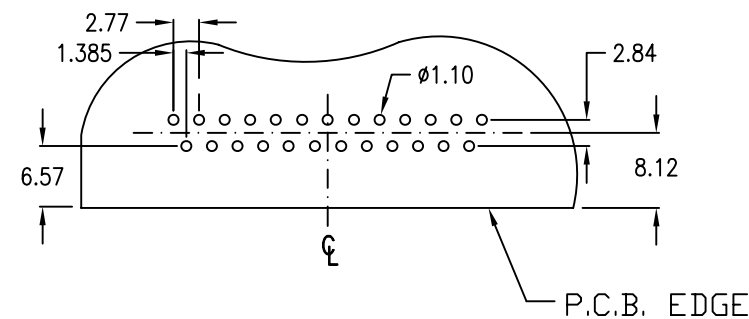
9-contact



15-contact



25-contact



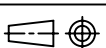
GENERAL TOLERANCE

as per
DIN 7168-m

SCALE 1=1

UNIT mm

SIZE A4



DRAWN RH

CHECK GH

APPROVE GH

DATE 14.11.06

DATE 20.11.06

DATE 20.11.06

DWG. NO.

WDBR-MXX-L/F

FOR PART NO.

SDM-xxx-NIP7-xx/Xxxx

P.C.B. Hole Layout for
WATERPROOF
D-Sub "Male"
Right Angle Type w/o Brackets

REV.

SHEET

2/2