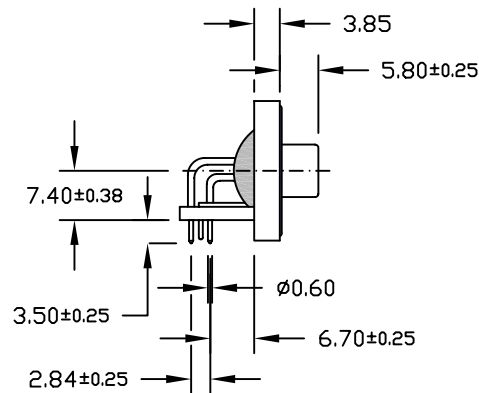
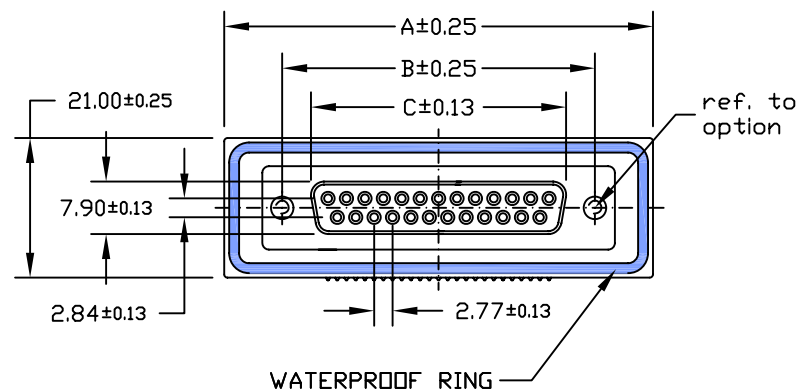


| Rev. | Remark | Date | Name |
|------|--------|------|------|
| | | | |



SPECIFICATION

Current Rate: 5 A
 Insulation Resistance: 5000 MΩ min.
 Contact Resistance: 10mΩ max.
 Dielectric voltage: 300V AC rms 50Hz
 Operation Temperature: -55°C to +85°C
 Salt Spray: 48 Hours
 Waterproof Rate: IP 67 Minimum

MECHANICAL CHARACTERISTICS:

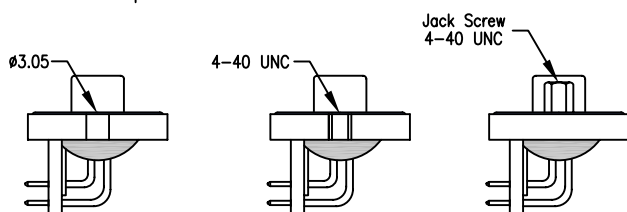
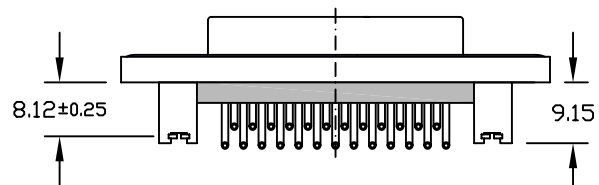
Contact Insertion Force: 339g/Pin max.
 Contact Separation Force: 40g/Pin min.

MATERIAL

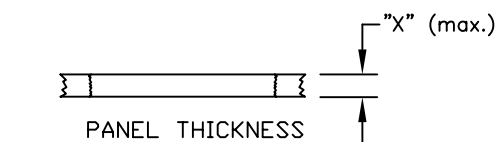
Contact Pin: Brass
 Insulation: PBT UL 94V-0 or Hi-Temp Plastic, request MOQ.
 Shell: Steel

PLATING

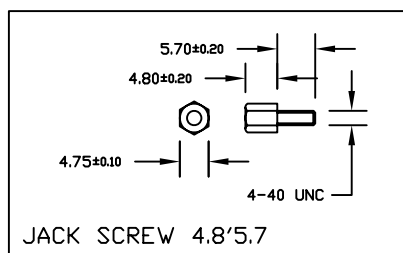
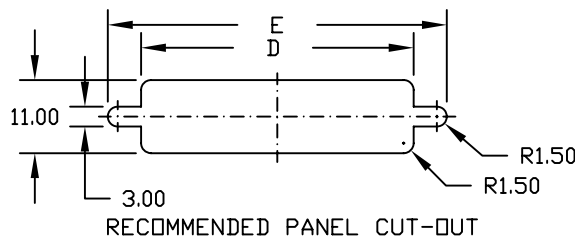
Contact: Gold flash over Nickel
 Shell: Nickel



Option: /B2 /B2T /B2TJ



Screw "L" = 5.7 for Panel thickness "X" between 1.2~2.0mm



Order Code
 SDF-xxx-NIP7-55/XxXX
 No. of contact Plating Option

| No. of contact | Dimensions | | | | |
|----------------|------------|-------|-------|-------|-------|
| | A | B | C | D | E |
| 009 | 39.40 | 24.99 | 16.33 | 20.00 | 28.20 |
| 015 | 47.70 | 33.30 | 24.66 | 28.00 | 36.50 |
| 025 | 64.50 | 47.04 | 38.38 | 41.50 | 51.00 |



GENERAL TOLERANCE
 as per
 DIN 7168-m

SCALE 1=1
 UNIT mm
 SIZE A4

DRAWN RH
 CHECK GH
 APPROVE GH

DATE 10.11.06
 DATE 10.11.06
 DATE 10.11.06

DWG. NO. WDBRA-FXX-L
 PART NO. SDF-xxx-NIP7-55/XxXX

WATERPROOF
 D-Sub "Female"
 Right Angle Type
 with Brackets

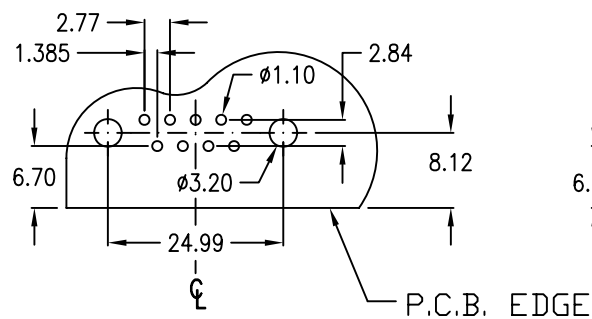
REV.
 SHEET 1/2

| Rev. | Remark | Date | Name |
|------|--------|------|------|
| | | | |

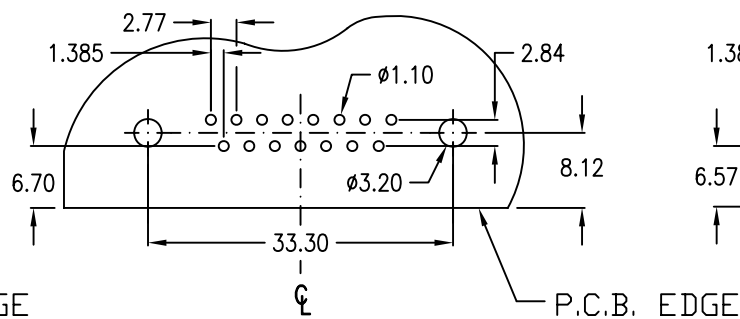
RECOMMENDED P.C.B. LAYOUT

Female

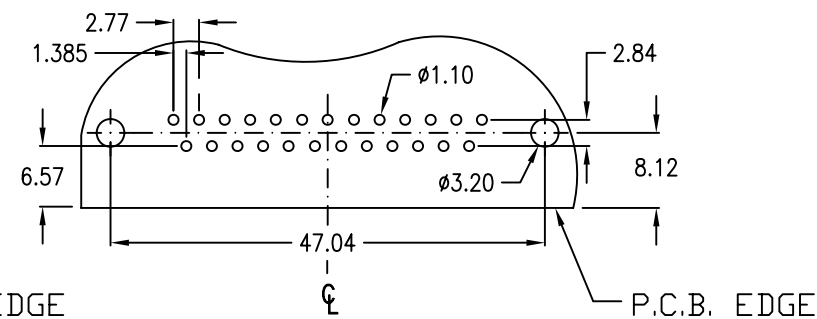
9-contact



15-contact



25-contact



GENERAL TOLERANCE
as per
DIN 7168-m

SCALE 1=1
UNIT mm
SIZE A4

DRAWN RH
CHECK GH
APPROVE GH

DATE 14.11.06
DATE 20.11.06
DATE 20.11.06

DWG. NO.
WDBRA-FXX-L/F
FOR PART NO.
SDF-xxx-FIP7-55/Xxxx

P.C.B. Hole Layout for
WATERPROOF
D-Sub "Female"
Right Angle Type with Brackets

REV.
SHEET
2/2

| Rev. | Remark | Date | Name |
|------|--------|------|------|
| | | | |

SPECIFICATION

Current Rate: 5 A
 Insulation Resistance: 5000 MΩ min.
 Contact Resistance: 10mΩ max.
 Dielectric voltage: 300V AC rms 50Hz
 Operation Temperature: -55°C to +85°C
 Salt Spray: 48 Hours
 Waterproof Rate: IP 67 Minimum

MECHANICAL CHARACTERISTICS:

Contact Insertion Force: 339g/Pin max.
 Contact Separation Force: 40g/Pin min.

MATERIAL

Contact Pin: Brass
 Insulation: PBT UL 94V-0 or Hi-Temp Plastic, request MOQ.
 Shell: Steel

PLATING

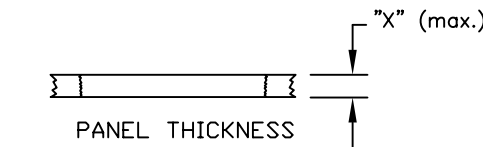
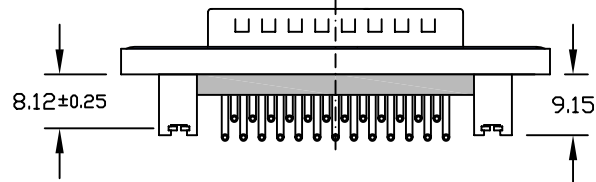
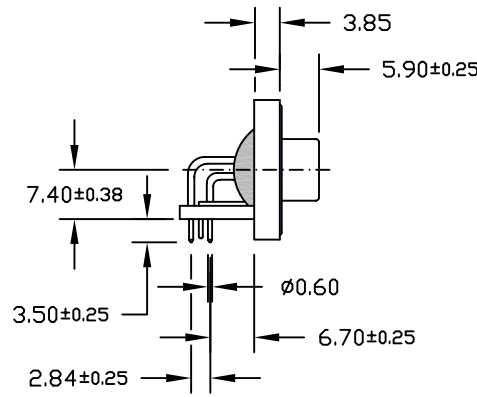
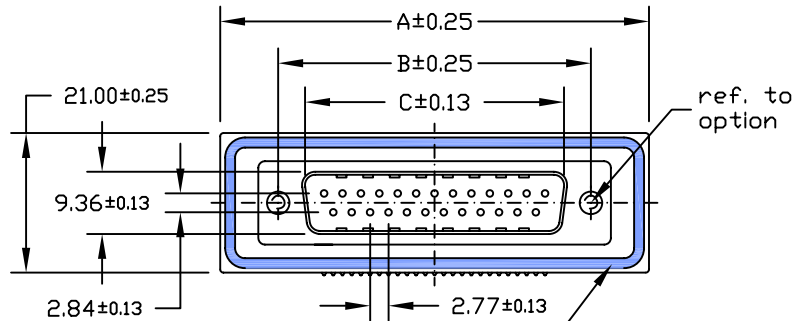
Contact: Gold flash over Nickel
 Shell: Nickel



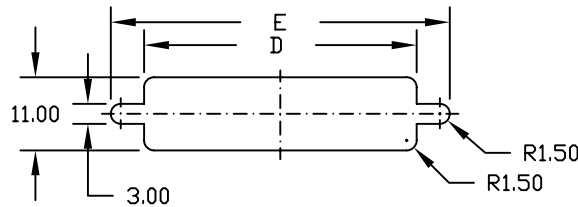
Order Code
 SDM-xxx-NIP7-55/XxXX

No. of contact: xxx
 Plating: 55
 Option: XxXX

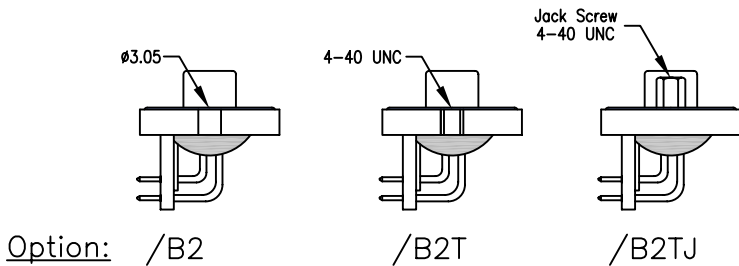
| No. of contact | Dimensions | | | | |
|----------------|------------|-------|-------|-------|-------|
| | A | B | C | D | E |
| 009 | 39.40 | 24.99 | 16.92 | 20.00 | 28.20 |
| 015 | 47.70 | 33.30 | 25.25 | 28.00 | 36.50 |
| 025 | 64.50 | 47.04 | 38.95 | 41.50 | 51.00 |



Screw "L" = 5.7 for Panel thickness "X" between 1.2~2.0mm



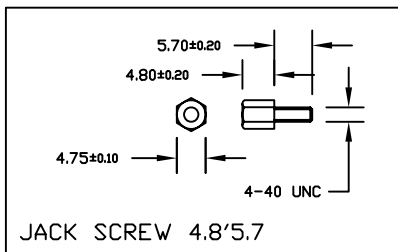
RECOMMENDED PANEL CUT-OUT



Option: /B2

/B2T

/B2TJ



JACK SCREW 4.8'5.7



GENERAL TOLERANCE

as per
DIN 7168-m

SCALE 1=1

UNIT mm

SIZE A4

DRAWN RH

CHECK GH

APPROVE GH

DATE 10.11.06

DATE 10.11.06

DATE 10.11.06

DWG. NO.

WDBR-MXX-L

PART NO.

SDM-xxx-NIP7-55/XxXX

WATERPROOF
D-Sub "Male"
right angle type
with Brackets

REV.

SHEET

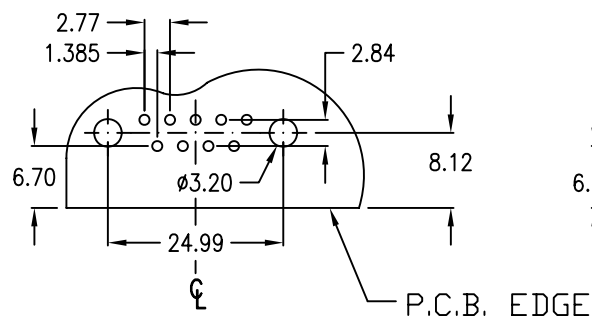
1/2

| Rev. | Remark | Date | Name |
|------|--------|------|------|
| | | | |

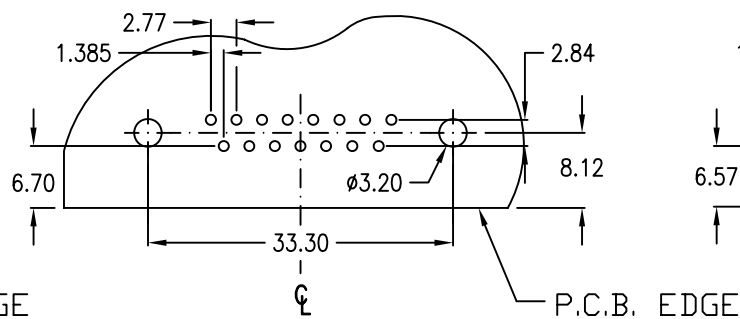
RECOMMENDED P.C.B. LAYOUT

Male

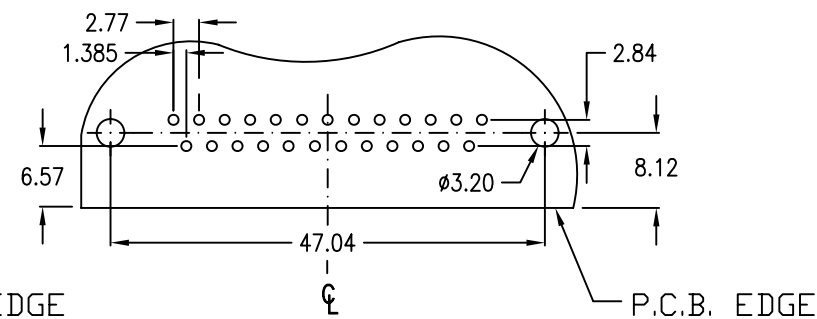
9-contact



15-contact



25-contact



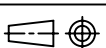
GENERAL TOLERANCE

as per
DIN 7168-m

SCALE 1=1

UNIT mm

SIZE A4



DRAWN RH

CHECK GH

APPROVE GH

DATE 14.11.06

DATE 20.11.06

DATE 20.11.06

DWG. NO.

WDBR-MXX-L/F

FOR PART NO.

SDM-xxx-NIP7-55/Xxxx

P.C.B. Hole Layout for
WATERPROOF
D-Sub "Male"
Right Angle Type with Brackets

REV.

SHEET

2/2