

Rev.	Remark	Date	Name

### SPECIFICATION

Current Rate: 5 A  
 Insulation Resistance: 5000 MΩ min.  
 Contact Resistance: 10mΩ max.  
 Dielectric voltage: 300V AC rms 50Hz  
 Operation Temperature: -55°C to +85°C  
 Salt Spray: 48 Hours  
 Waterproof Rate: IP 67 Minimum

### MECHANICAL CHARACTERISTICS:

Contact Insertion Force: 339g/Pin max.  
 Contact Separation Force: 40g/Pin min.

### MATERIAL

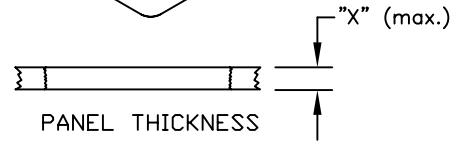
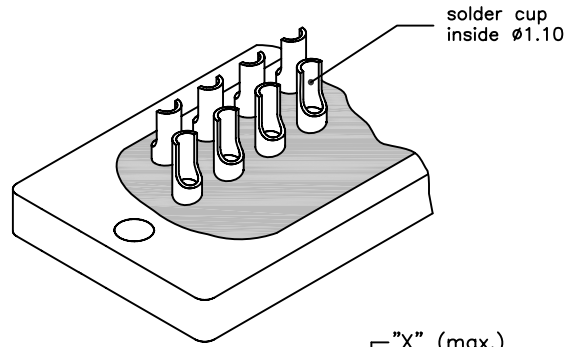
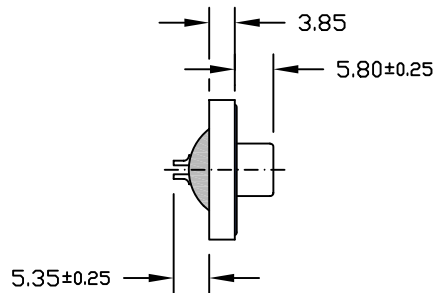
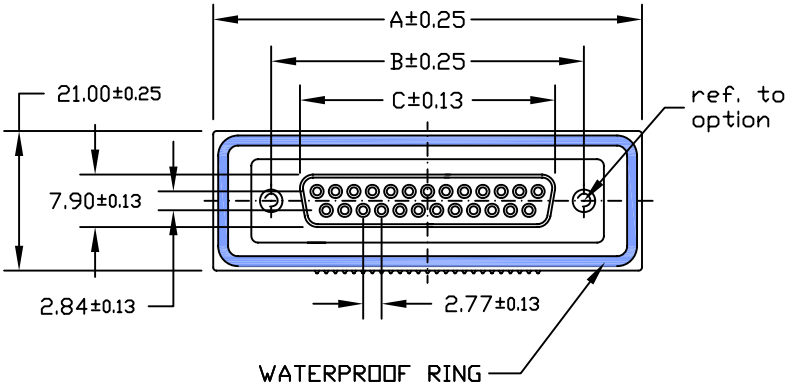
Contact Pin: Brass  
 Insulation: PBT UL 94V-0 or Hi-Temp Plastic, request MOQ.  
 Shell: Steel

### PLATING

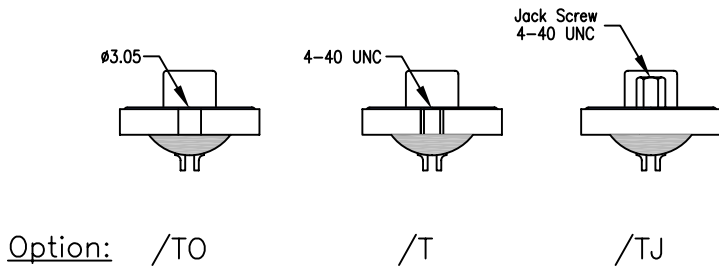
Contact: Gold flash over Nickel  
 Shell: Nickel



Order Code  
 SDF-xxx-SIP01-55/Xx  
 No. of contact | Plating | Option



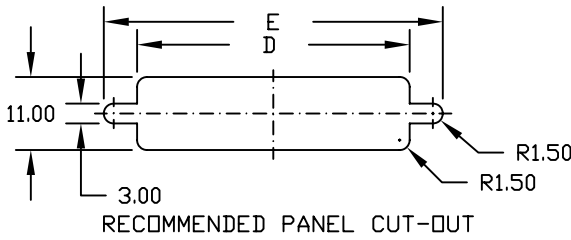
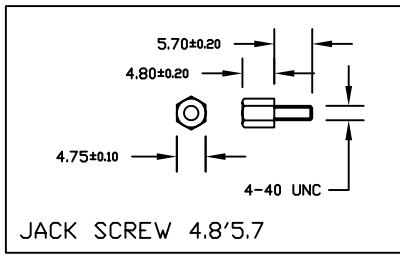
Screw "L" = 5.7 for Panel thickness "X" between 1.2~2.0mm



Option: /TO

/T

/TJ



No. of contact	Dimensions				
	A	B	C	D	E
009	39.40	24.99	16.33	20.00	28.20
015	47.70	33.30	24.66	28.00	36.50
025	64.50	47.04	38.38	41.50	51.00



GENERAL TOLERANCE  
 as per  
 DIN 7168-m

SCALE 1=1  
 UNIT mm  
 SIZE A4

DRAWN RH  
 CHECK GH  
 APPROVE GH

DATE 10.11.06  
 DATE 10.11.06  
 DATE 10.11.06

DWG. NO.  
 C-ED-B-082-030  
 PART NO.  
 SDF-xxx-SIP01-xx/Tx

WATERPROOF  
 D-Sub "Female"  
 solder cup Type

REV.  
 SHEET  
 1/1

Rev.	Remark	Date	Name

### SPECIFICATION

Current Rate: 5 A  
 Insulation Resistance: 5000 MΩ min.  
 Contact Resistance: 10mΩ max.  
 Dielectric voltage: 300V AC rms 50Hz  
 Operation Temperature: -55°C to +85°C  
 Salt Spray: 48 Hours  
 Waterproof Rate: IP 67 Minimum

### MECHANICAL CHARACTERISTICS:

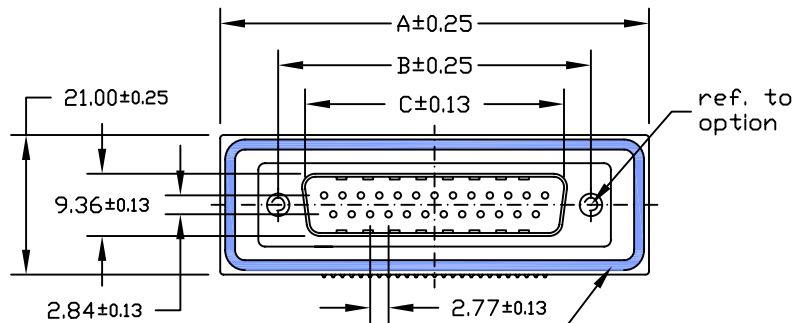
Contact Insertion Force: 339g/Pin max.  
 Contact Separation Force: 40g/Pin min.

### MATERIAL

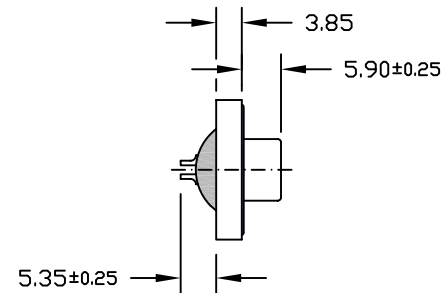
Contact Pin: Brass  
 Insulation: PBT UL 94V-0 or Hi-Temp Plastic, request MOQ.  
 Shell: Steel

### PLATING

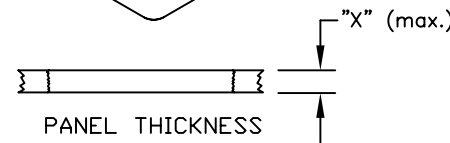
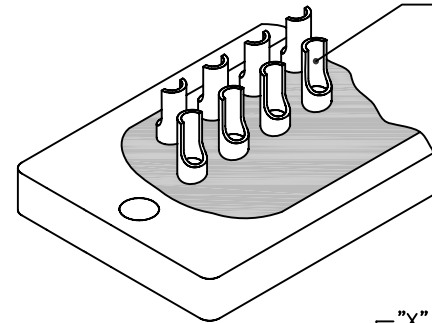
Contact: Gold flash over Nickel  
 Shell: Nickel



WATERPROOF RING



solder cup inside ø1.10



Screw "L" = 5.7 for Panel thickness "X" between 1.2~2.0mm

### Order Code

SDM-xxx-SIP01-55/Xx

No. of contact

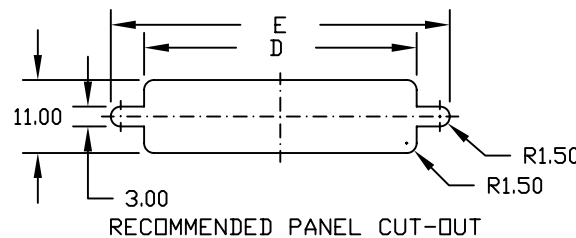
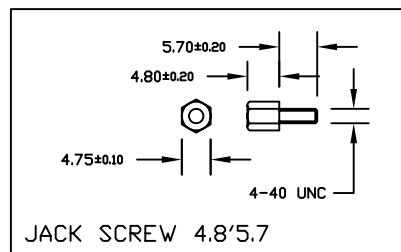
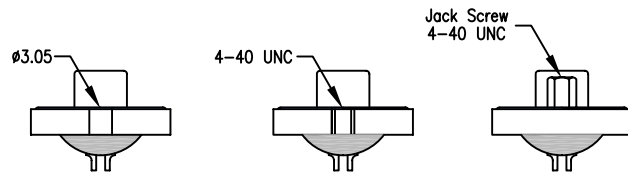
Plating

Option

Option: /TO

/T

/TJ



No. of contact	Dimensions				
	A	B	C	D	E
009	39.40	24.99	16.92	20.00	28.20
015	47.70	33.30	25.25	28.00	36.50
025	64.50	47.04	38.95	41.50	51.00



GENERAL TOLERANCE

as per  
DIN 7168-m

SCALE 1=1

UNIT mm

SIZE A4

DRAWN RH

CHECK GH

APPROVE GH

DATE 10.11.06

DATE 10.11.06

DATE 10.11.06

DWG. NO.

C-ED-B-082-030

PART NO.

SDM-xxx-SIP01-xx/Tx

WATERPROOF  
D-Sub "Male"  
solder cup Type

REV.

SHEET

1/1