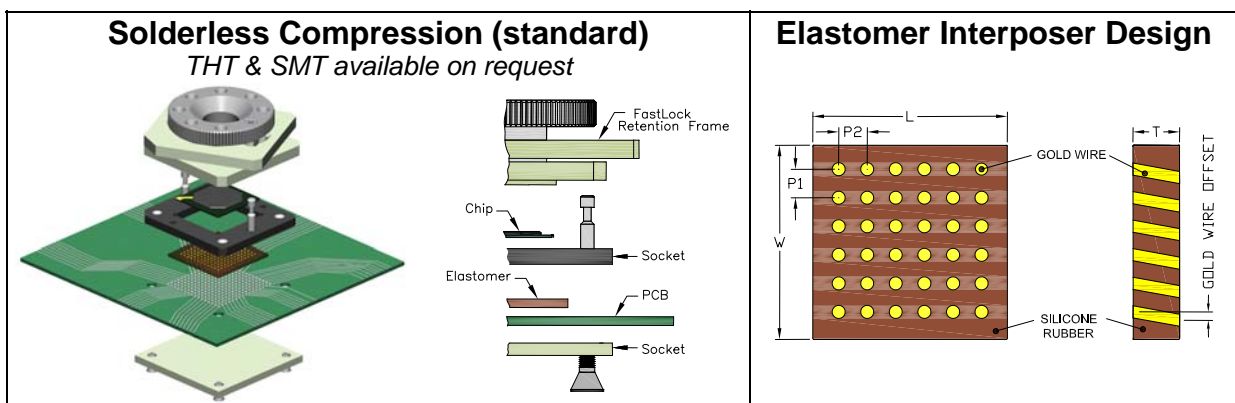


# E-tec Socketing solutions for BGA – LGA – CGA – CSP – MFL & Gullwing Chips

## Available contact styles:

- ◆ Elastomer interposers (10 GHz and more)
- ◆ Probe pin sockets (generally below 5 GHz)
- ◆ Other interposer styles on request

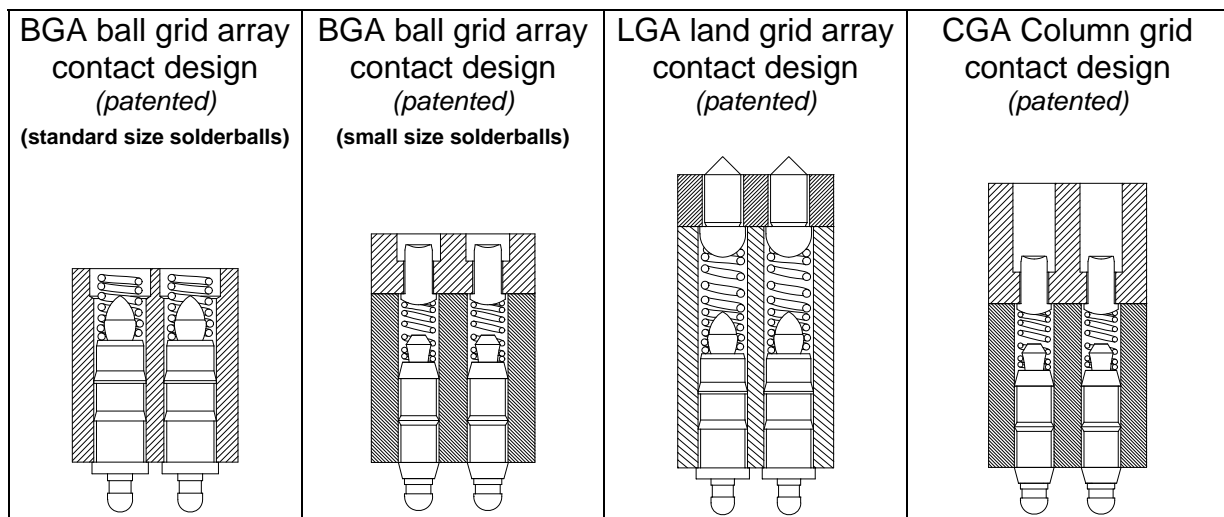
## 1. E-tec Elastomer Sockets



### Elastomer Socket Features:

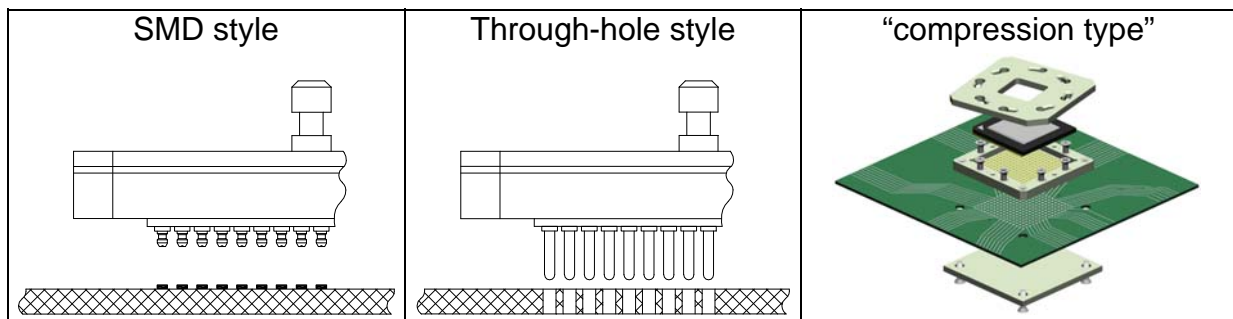
- ◆ elastomer = gold plated round 0.03mm metal wires embedded densely into soft silicon
- ◆ elastomer thickness 0.50mm & 1.00mm (standard) – others on request
- ◆ very low inductance (below 1nH) & frequency in excess of 10 GHz
- ◆ recommended working travel 0.12mm
- ◆ normal contact force: 40 to 50 grams
- ◆ any pincount & chip size up to 39 x 39mm
- ◆ sockets adapt to all chip styles & any pitch down to 0.30mm
- ◆ many different locking systems (FastLock, TwistLock, ClamShell, etc.)

## 1. E-tec Patented Probe Pin Sockets

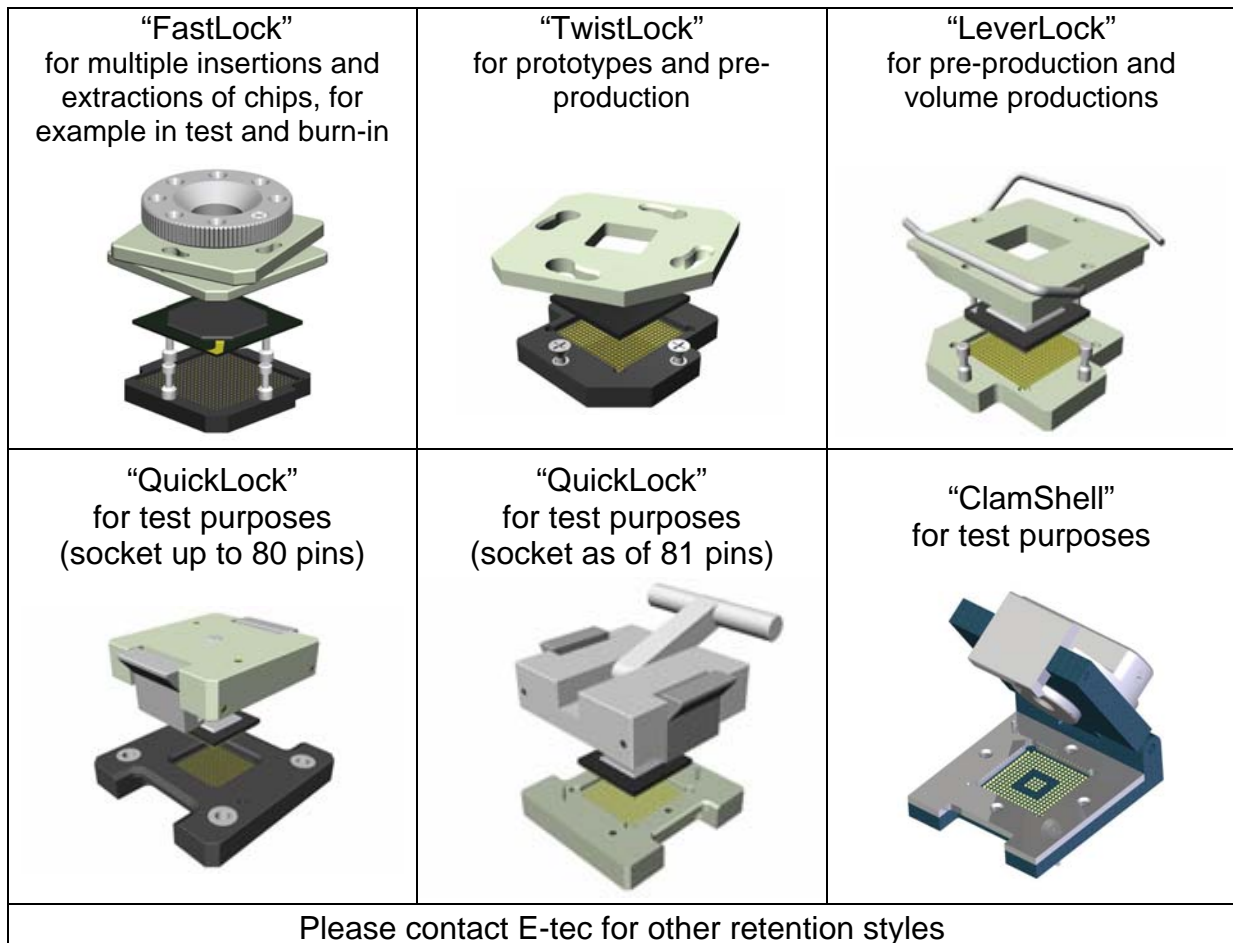


### Probe Pin Socket Features:

- ◆ only 40 grams per contact after closing the socket
- ◆ socket adapt to all package styles (at present, down to 0.40mm pitch)
- ◆ same PCB layout as the chip (no holes required for SMD socket)
- ◆ raised SMD for lifting socket over components
- ◆ thermal expansion, shock and vibration absorbed by E-tec contact design
- ◆ low profile socket (TwistLock is less than 10.00mm including chip)
- ◆ heat dissipation with open frame heat sink
- ◆ low inductance of less than 2 nH
- ◆ Frequency range up to 3 GHz (others on request)
- ◆ LGA contact design can also be used for board-to-board connections
- ◆ available in SMT, raised SMT, thru-hole and “compression type” pin probe sockets



### 3. Available retention designs from E-tec



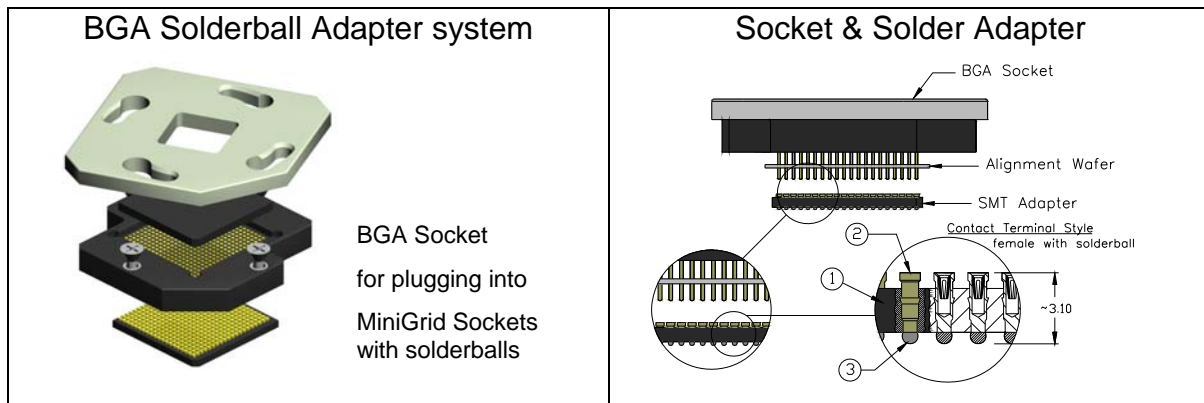
### 3. E-tec Solderball Adapter Solution

For customers who prefer to solder regular solderballs instead of tin plated brass pins to the PCB, E-tec offers the “Solder Ball Adapter” solution. A “MiniGrid” socket with solderballs attached (available as of 0.80mm pitch upwards) is reflow mounted to the PCB first and thereafter a thru-hole socket can be plugged into the solderball adapter.

Advantages: easy soldering of adapter to PCB (standard process, same as chip).  
The adapter has smaller outline than the socket.

Disadvantages: smallest pitch: 0.80mm

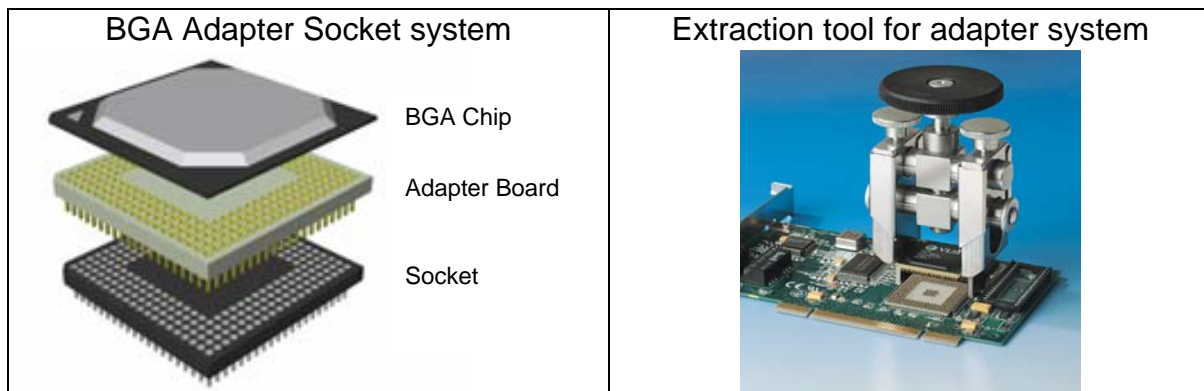
Options: the MiniGrid sockets are also available with solid tin plated brass pins for soldering to the PCB (without solderballs) = lower cost solution and possibility to desolder and resolder the adapter



### 5. E-tec Adapter system (alternative to true socket system)

Advantages: smaller outer dimensions than true socket

Disadvantages: Chip needs to be soldered to adapter board.  
Can only be used with BGA Chips.  
Smallest pitch 1.00mm  
Relatively high insertion & extraction forces (difficult without tool)



# Classification Reflow Profiles as per IPC/JEDEC J-STD-20C

Table 5-2 Classification Reflow Profiles

Profile Feature	Sn-Pb Eutectic Assembly	Pb-Free Assembly
Average Ramp-Up Rate (Ts <sub>max</sub> to Tp)	3 °C/second max.	3° C/second max.
<b>Preheat</b>		
- Temperature Min (Ts <sub>min</sub> )	100 °C	150 °C
- Temperature Max (Ts <sub>max</sub> )	150 °C	200 °C
- Time (ts <sub>min</sub> to ts <sub>max</sub> )	60-120 seconds	60-180 seconds
Time maintained above:		
- Temperature (T <sub>L</sub> )	183 °C	217 °C
- Time (t <sub>L</sub> )	60-150 seconds	60-150 seconds
Peak/Classification Temperature (Tp)	See Table 4.1	See Table 4.2
Time within 5 °C of actual Peak Temperature (tp)	10-30 seconds	20-40 seconds
Ramp-Down Rate	6 °C/second max.	6 °C/second max.
Time 25 °C to Peak Temperature	6 minutes max.	8 minutes max.

Note 1: All temperatures refer to topside of the package, measured on the package body surface.

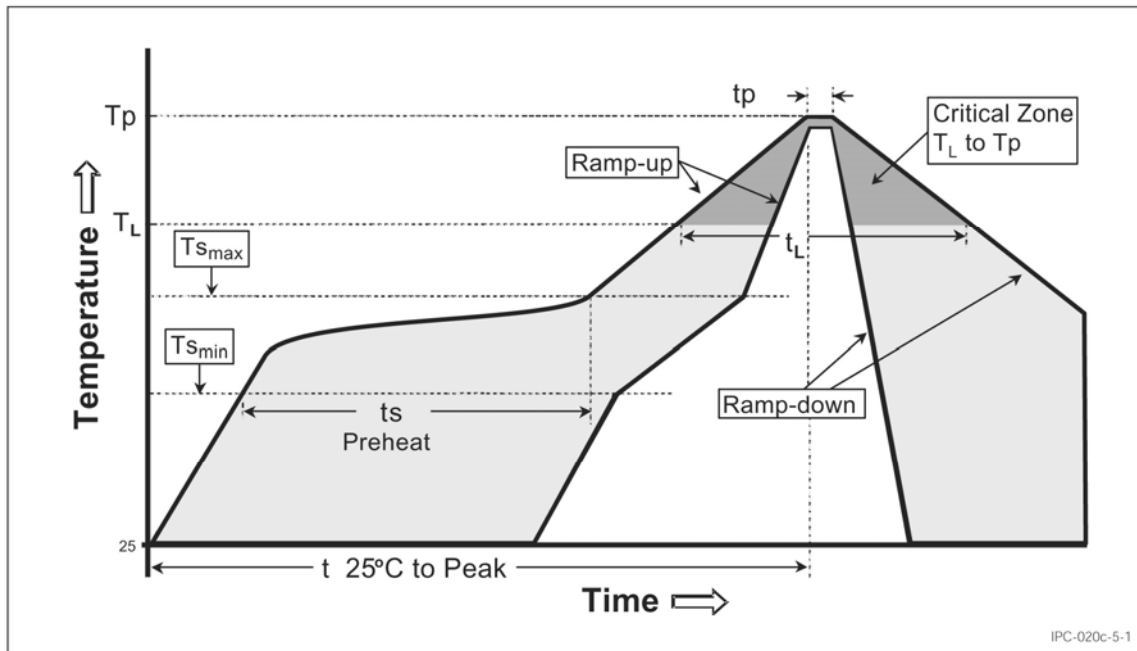


Figure 5-1 Classification Reflow Profile

Table 4-1 SnPb Eutectic Process – Package Peak Reflow Temperatures

Package Thickness	Volume mm <sup>3</sup> <350	Volume mm <sup>3</sup> ≥ 350
<2.5 mm	240 +0/-5 °C	225 +0/-5 °C
≥ 2.5 mm	225 +0/-5 °C	225 +0/-5 °C

Table 4-2 Pb-free Process – Package Classification Reflow Temperatures

Package Thickness	Volume mm <sup>3</sup> <350	Volume mm <sup>3</sup> 350 - 2000	Volume mm <sup>3</sup> >2000
<1.6 mm	260 +0 °C *	260 +0 °C *	260 +0 °C *
1.6 mm - 2.5 mm	260 +0 °C *	250 +0 °C *	245 +0 °C *
≥2.5 mm	250 +0 °C *	245 +0 °C *	245 +0 °C *

\* Tolerance: The device manufacturer/supplier shall assure process compatibility up to and including the stated classification temperature (this means Peak reflow temperature +0 °C. For example 260 °C+0°C) at the rated MSL level.

- Note 1:** The profiling tolerance is + 0 °C, -X °C (based on machine variation capability) whatever is required to control the profile process but at no time will it exceed - 5 °C. The producer assures process compatibility at the peak reflow profile temperatures defined in Table 4.2.
- Note 2:** Package volume excludes external terminals (balls, bumps, lands, leads) and/or nonintegral heat sinks.
- Note 3:** The maximum component temperature reached during reflow depends on package thickness and volume. The use of convection reflow processes reduces the thermal gradients between packages. However, thermal gradients due to differences in thermal mass of SMD packages may still exist.
- Note 4:** Components intended for use in a "lead-free" assembly process shall be evaluated using the "lead free" classification temperatures and profiles defined in Tables 4-1, 4.2 and 5-2 whether or not lead free.

## Chip package styles used with E-tec sockets:

### **BGA “Ball Grid Array”**

Comprises plastic packages with “cavity up” (= processor is located on top of the substrate) and “cavity down” (= processor is located below the substrate), as well as ceramic packages. The plastic packages with 1.27mm (.050”) ball pitch have solderballs of 0.60mm (.024”) height with a diameter of 0.76mm (.030”), while the ceramic packages have solderballs of 0.90mm (.035”) height with a diameter of 0.86mm (.034”). The most common pitch is 1.27mm (.050”), but other pitches such as 1.00mm (.039”), 1.50mm (.059”) or 2.00mm (.079”) or interstitial pitches are also available.

### **CSP “Chip Scale Packaging”**

The outer dimensions of these packages, which are also supplied in “ball grid array technology”, are designed so as not to exceed the size of the processor by more than 20%. The pitch starts with 0.80mm (.032”) and reduces to 0.50mm (.020”). The solderball diameter in this pitch size is as little as 0.30mm (.012”).

### **LGA “Land Grid Array”**

These chips are supplied with a gold pad (= land) instead of the solderballs. The advantage of this package is that it is cheaper to manufacture (no solder balls required). The disadvantage is that it is more difficult to assemble onto a PCB (connector required).

### **CGA “Column Grid Array”**

Soldercolumns of more than 2.00mm (.079”) height replace the standard 0.90mm (.035”) solderballs. These soldercolumns overcome the problem of “thermal expansion” of the chip and the inherent mechanical stress this exercises on the solderjoints of standard solderballs. These relatively soft columns have the ability of absorbing the “micro movements” of the chip thus eliminating the problem.

### **QFN/MLF “micro leadframe”**

These chips are a near CSP plastic encapsulated packages which present lands instead of solderballs around the four sides of the package.

***E-tec exclusive distributed by***

**EMC electro mechanical components Vertriebs GmbH**

**D-65501 Idstein, Postfach 1160 ; Tel.: 06126 / 9395-0 FAX: 06126 / 9395-72**

[www.emc-steckverbinder.de](http://www.emc-steckverbinder.de)

[info@emc-steckverbinder.de](mailto:info@emc-steckverbinder.de)