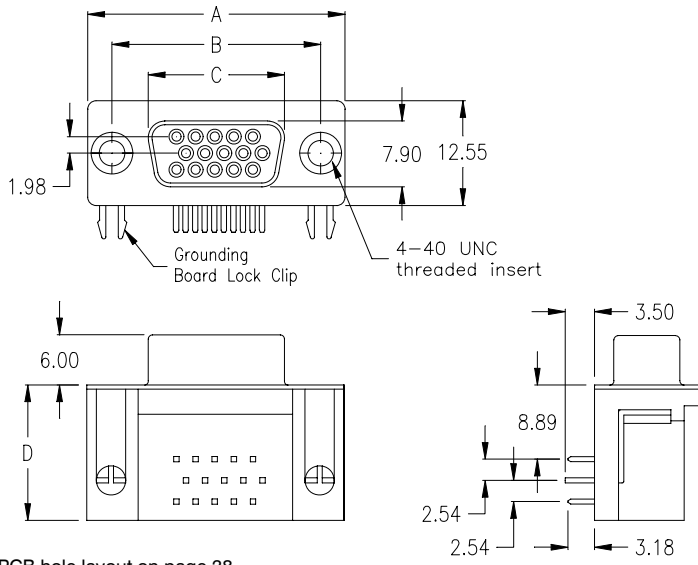


SH Series - High Density D-Sub 90°

F900 "Wave Solder" & "Pin-In-Paste" Technology

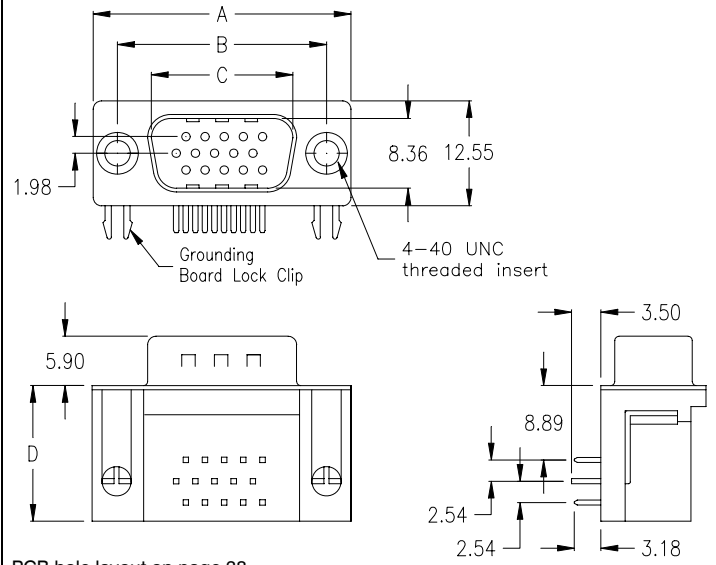


Female



PCB hole layout on page 38

male



PCB hole layout on page 38

No. of contacts	Dimension				Ordering Code
	A	B	C	D	
015	30.81	24.99	16.33	16.22	SHF-015-F900-55/ XX SHF-015-F900-95/V XX
	1.213	.984	.643	.639	
026	39.14	33.32	24.66	16.22	SHF-026-F900-55/ XX
	1.541	1.311	.971	.639	
044	53.04	47.04	38.38	16.22	SHF-044-F900-55/ XX
	2.088	1.852	1.511	.639	
062	69.32	63.50	54.84	16.22	SHF-062-F900-55/ XX
	2.729	2.500	2.159	.639	

Plating: **-55** = gold/gold (not available for VESA Type)
-95 = tin(leadfree)/gold

Option

No. of contacts	Dimension				Ordering Code
	A	B	C	D	
015	30.81	24.99	16.92	16.22	SHM-015-F900-55/ XX
	1.213	.984	.666	.639	
026	39.14	33.32	25.25	16.22	SHM-026-F900-55/ XX
	1.541	1.311	.994	.639	
044	53.04	47.04	38.96	16.22	SHM-044-F900-55/ XX
	2.088	1.852	1.534	.639	
062	69.32	63.50	55.42	16.22	SHM-062-F900-55/ XX
	2.729	2.500	2.182	.639	

Plating: **-55** = gold/gold
-95 = tin(leadfree)/gold (only on request)

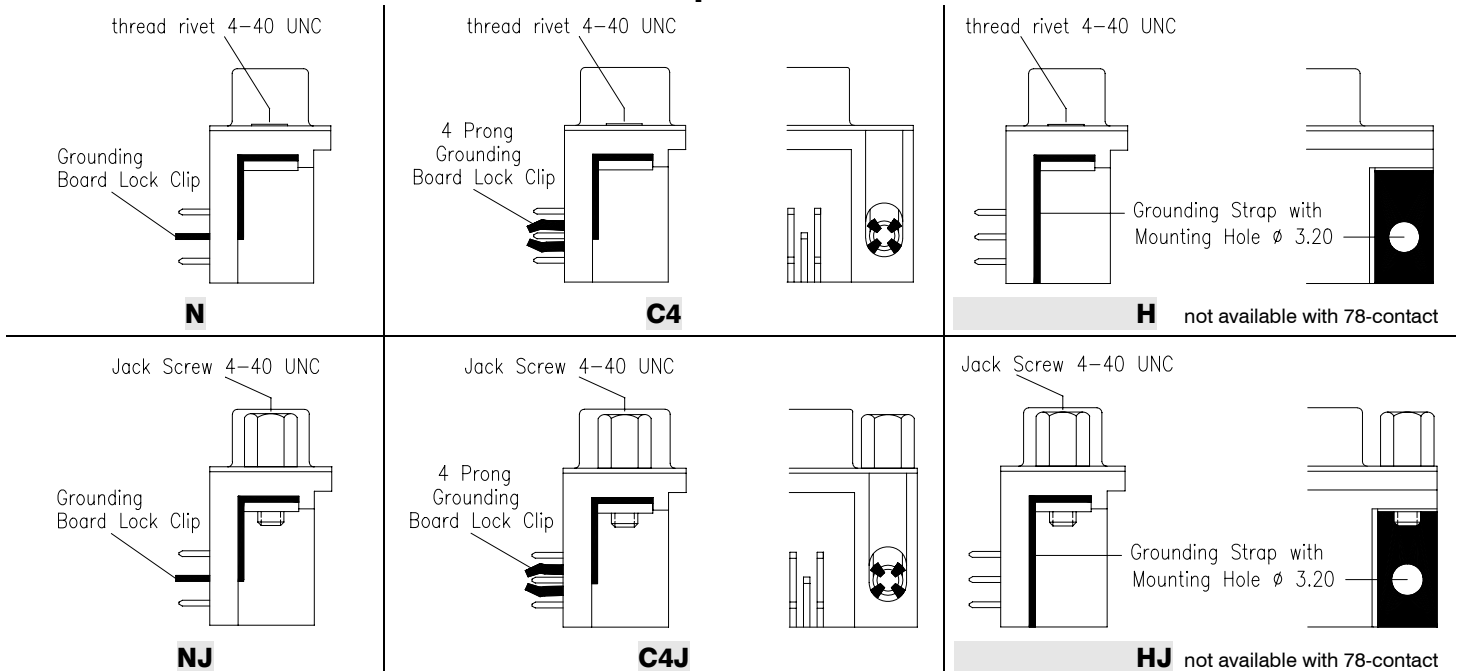
Option

SHF - xxx - F900 - 95/V XX = VESA Type - blue colour insulator
Contact #9 recessed 1.27mm to allow last mate, first break on 5V supply

"Pin-In-Paste" Technology - for availability pls. contact info@e-tec.com

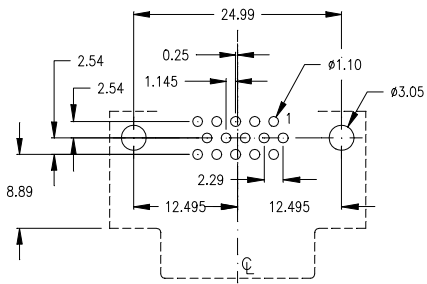
General Specification page 72

Options



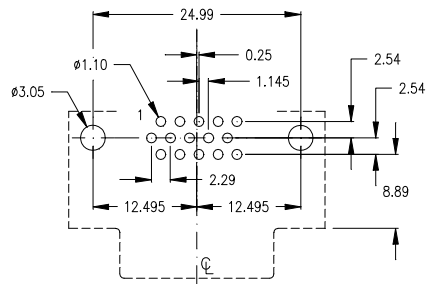
Footprints High Density D-Sub 90° (top view)

female

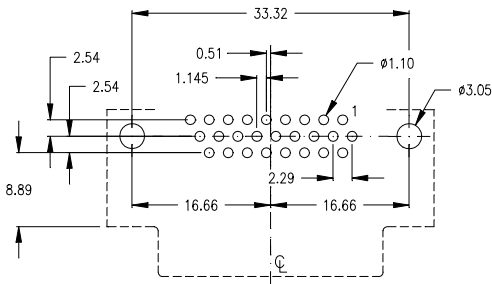


15-pin

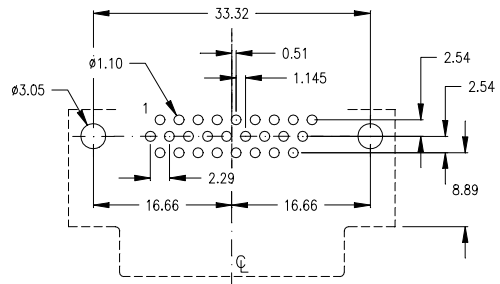
male



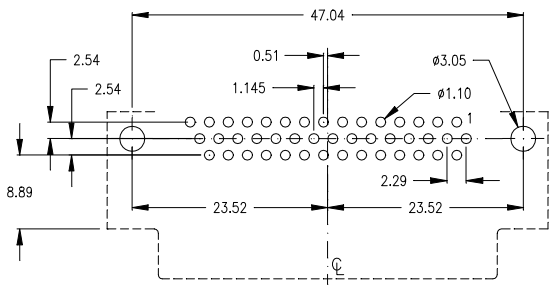
15-pin



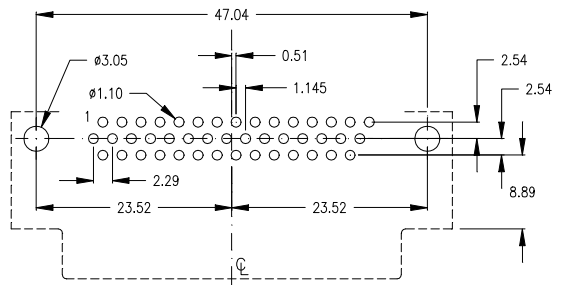
26-pin



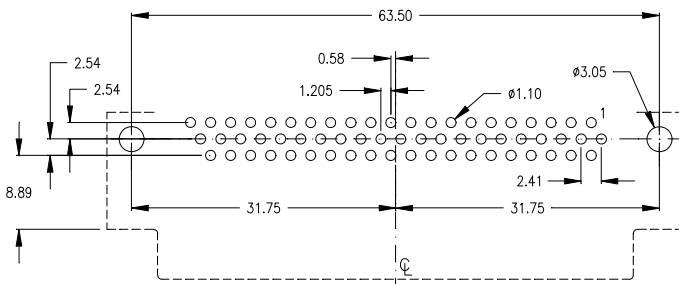
26-pin



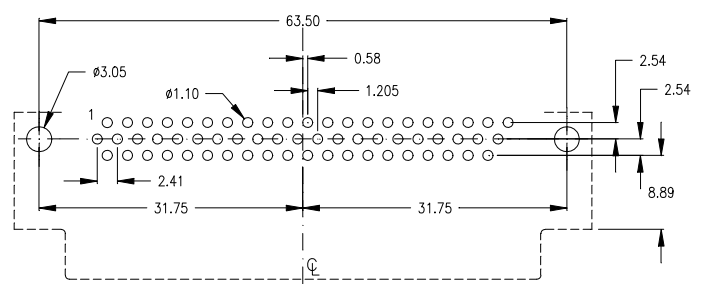
44-pin



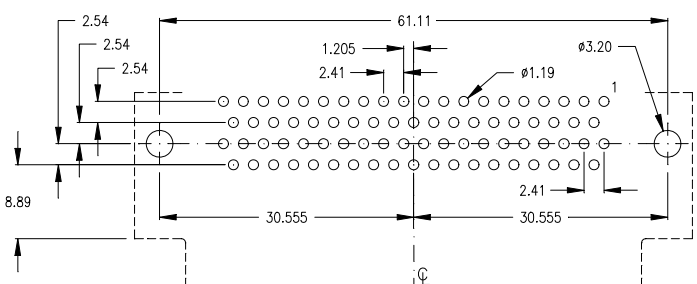
44-pin



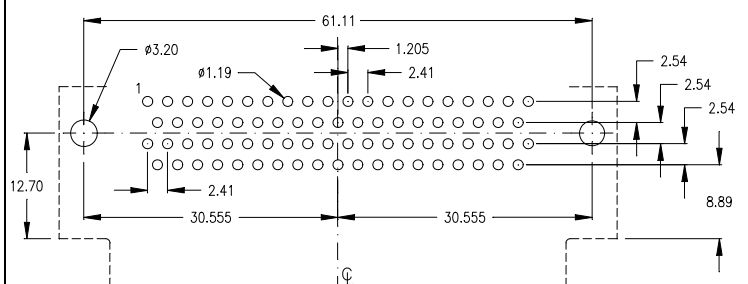
62-pin



62-pin



78-pin



78-pin



mechanical data

Mating force per contact	≤ 3,4 N
Unmating force per contact	≥ 0,2 N
Temperature range	-55° C to +105° C
Processing temperature wave solder (solder bath)	+250°C +0/-5°C for 10sec.
Processing temperature SMT and "pin in paste"	+250°C +0/-5°C for 20~40sec.
Moisture absorption from air 50% rh	0,10%
IDC Connector types accept AWG 26 or AWG 28 standard wire	

materials and plating (RoHS compliant)

Insulator for wave solder technology, standard black - PC 99 colourful insulator	thermoplastic glassfilled UL 94V – 0 Yellowish brown - Pantone # 131C 15-pos. female Burgundy - Pantone # 235C 25-pos. female Teal - Pantone # 322C 9-pos. male Blue - Pantone # 661C HD 15-pos. female
Insulator for SMT and "Pin-In-Paste"	Nylon UL 94V-0
Shell	Steel, Ni plated
Bracket	Brass, tin plated
Male contact - plating	Copper Alloy (Standard; others on request) -95 = solder side Sn; contact side Au over Ni -55 = solder and contact side Au over Ni
Female contact - plating	Copper Alloy (Standard; others on request) -95 = solder side Sn; contact side Au over Ni -55 = solder and contact side Au over Ni
D-Sub Accessories (page 70) plating	-NN = Ni

electrical data

max. Current rating	5 A/25°C 3 A/70°C (High Density types 3A / IDC types 1A)
Operating voltage	250 V
Test voltage between contacts	1000 V / 50/60 Hz / 1 Minute
Test voltage between shell and contacts	1000 V / 50/60 Hz / 1 Minute
Resistance between mated contacts	< 30 m Ω
Insulation resistance	≥ 1000 M Ω at 500V DC
Dielectric strength	1000 V AC min. for 1 Minute
Volume resistivity	10 ¹⁶ Ω cm (ASTM-D 257)

available performance classes

E-tec D-Sub connectors comply with Performance Class 3 (min. 50 contact cycles).

Please contact E-tec first for availability of Performance Class 2 (min. 200 contact cycles) and 1 (min. 500 contact cycles)

D-Sub with Filter (ferrite)

Frequency range	10 - 300 MHz
Impedance	5 MHz - 15 Ω
	25 MHz - 30 Ω
	100 MHz - 50 Ω
	300 MHz - 75 Ω

