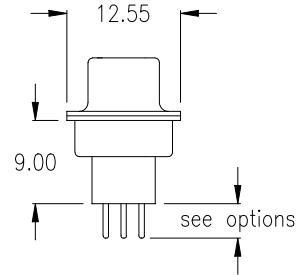
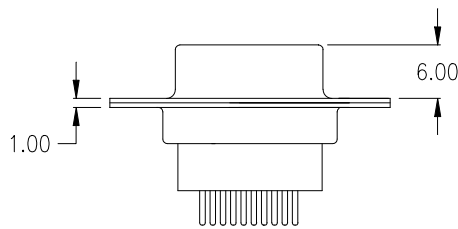
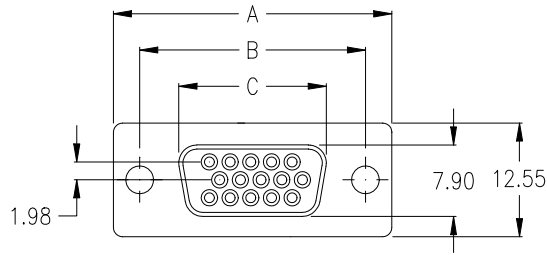


SH Series - High Density D-Sub

B111 raised soldertail type



female



Ordering Code

SHF - xxx - B111 - 95 / XXX

No. of contacts

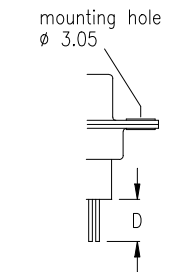
Option

Plating: -95 = tin (leadfree)/gold

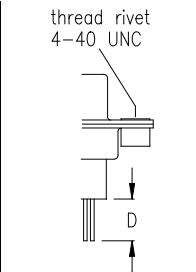
General Specification page 72

No. of contacts	Dimension		
	A	B	C
015	<u>30.81</u> 1.213	<u>24.99</u> .984	<u>16.33</u> .643
026	<u>39.14</u> 1.541	<u>33.32</u> 1.312	<u>24.66</u> .971
044	<u>53.04</u> 2.088	<u>47.04</u> 1.852	<u>38.38</u> 1.511
062	<u>69.32</u> 2.729	<u>63.50</u> 2.500	<u>54.84</u> 2.159

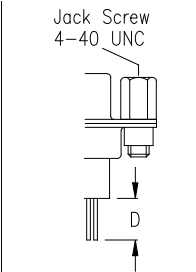
Options



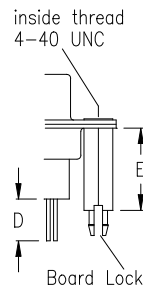
Standard:
T0 if „D“ = 5.30mm
On request:
T02 if „D“ = 3.80mm



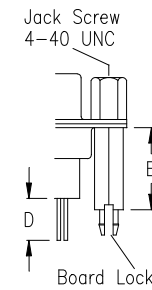
Standard:
T if „D“ = 5.30mm
On request:
T2 if „D“ = 3.80mm



Standard:
TJ if „D“ = 5.30mm
On request:
TJ2 if „D“ = 3.80mm



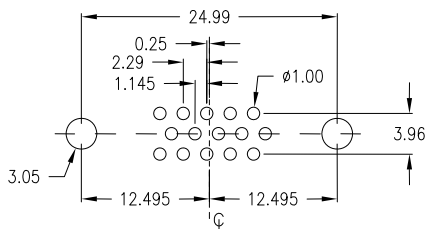
BR



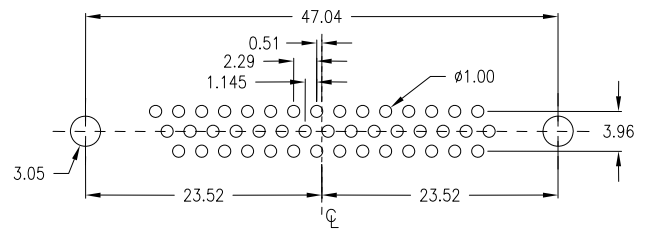
BR J

D	E	Option
3,80	9,60	1
5,30	11,00	2
7,20	12,70	3
7,40	13,50	5

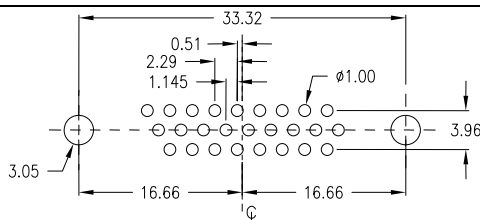
PCB Layout „female“



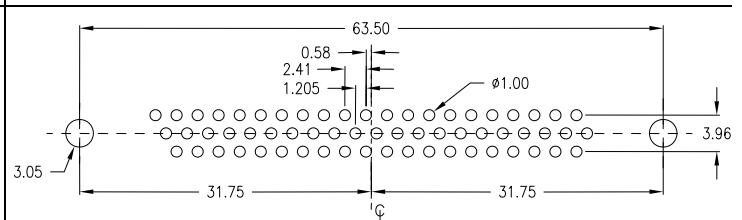
15 pin



44 pin



26 pin



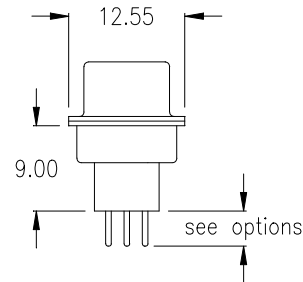
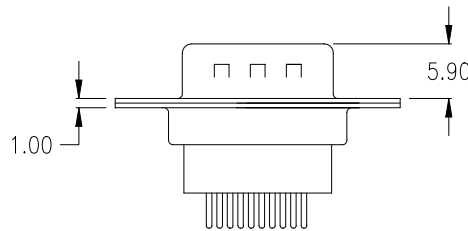
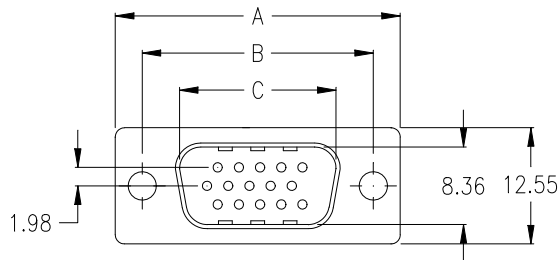
62 pin

SH Series - High Density D-Sub

B111 raised soldertail type



male



Ordering Code

SHM - xxx - B111 - 55 / XXX

No. of contacts

Option

Plating: **-55** = gold

General Specification page 72

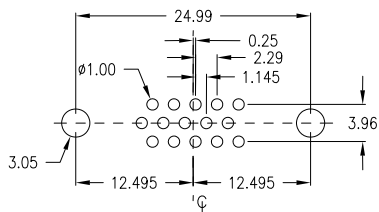
No. of contacts	Dimension		
	A	B	C
015	<u>30.81</u> 1.213	<u>24.99</u> .984	<u>16.92</u> .666
026	<u>39.14</u> 1.541	<u>33.32</u> 1.312	<u>25.25</u> .994
044	<u>53.04</u> 2.088	<u>47.04</u> 1.852	<u>38.96</u> 1.534
062	<u>69.32</u> 2.729	<u>63.50</u> 2.500	<u>55.42</u> 2.182

Options

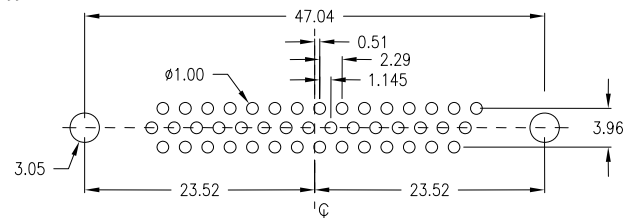
<p>mounting hole ø 3.05</p> <p>Standard: T0 if „D“ = 5.30mm On request: T02 if „D“ = 3.80mm</p>	<p>thread rivet 4-40 UNC</p> <p>Standard: T if „D“ = 5.30mm On request: T2 if „D“ = 3.80mm</p>	<p>Jack Screw 4-40 UNC</p> <p>Standard: TJ if „D“ = 5.30mm On request: TJ2 if „D“ = 3.80mm</p>
---	--	--

<p>inside thread 4-40 UNC</p> <p>Board Lock</p> <p>BR</p>	<p>Jack Screw 4-40 UNC</p> <p>Board Lock</p> <p>BR J</p>	<table border="1"> <thead> <tr> <th>D</th> <th>E</th> <th>Option</th> </tr> </thead> <tbody> <tr> <td>3,80</td> <td>9,60</td> <td>1</td> </tr> <tr> <td>5,30</td> <td>11,00</td> <td>2</td> </tr> <tr> <td>7,20</td> <td>12,70</td> <td>3</td> </tr> <tr> <td>7,40</td> <td>13,50</td> <td>5</td> </tr> </tbody> </table>	D	E	Option	3,80	9,60	1	5,30	11,00	2	7,20	12,70	3	7,40	13,50	5
D	E	Option															
3,80	9,60	1															
5,30	11,00	2															
7,20	12,70	3															
7,40	13,50	5															

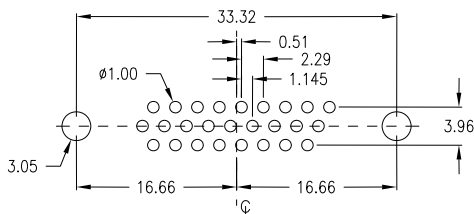
PCB Layout „male“



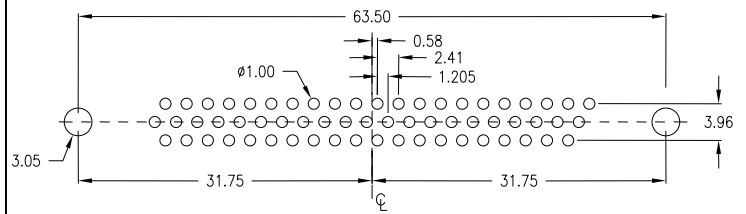
15 pin



44 pin



26 pin



62 pin



mechanical data

Mating force per contact	≤ 3,4 N
Unmating force per contact	≥ 0,2 N
Temperature range	-55° C to +105° C
Processing temperature wave solder (solder bath)	+250°C +0/-5°C for 10sec.
Processing temperature SMT and "pin in paste"	+250°C +0/-5°C for 20~40sec.
Moisture absorption from air 50% rh	0,10%
IDC Connector types accept AWG 26 or AWG 28 standard wire	

materials and plating (RoHS compliant)

Insulator for wave solder technology, standard black - PC 99 colourful insulator	thermoplastic glassfilled UL 94V – 0 Yellowish brown - Pantone # 131C 15-pos. female Burgundy - Pantone # 235C 25-pos. female Teal - Pantone # 322C 9-pos. male Blue - Pantone # 661C HD 15-pos. female
Insulator for SMT and "Pin-In-Paste"	Nylon UL 94V-0
Shell	Steel, Ni plated
Bracket	Brass, tin plated
Male contact - plating	Copper Alloy (Standard; others on request) -95 = solder side Sn; contact side Au over Ni -55 = solder and contact side Au over Ni
Female contact - plating	Copper Alloy (Standard; others on request) -95 = solder side Sn; contact side Au over Ni -55 = solder and contact side Au over Ni -NN = Ni
D-Sub Accessories (page 70) plating	

electrical data

max. Current rating	5 A/25°C 3 A/70°C (High Density types 3A / IDC types 1A)
Operating voltage	250 V
Test voltage between contacts	1000 V / 50/60 Hz / 1 Minute
Test voltage between shell and contacts	1000 V / 50/60 Hz / 1 Minute
Resistance between mated contacts	< 30 m Ω
Insulation resistance	≥ 1000 M Ω at 500V DC
Dielectric strength	1000 V AC min. for 1 Minute
Volume resistivity	10 ¹⁶ Ω cm (ASTM-D 257)

available performance classes

E-tec D-Sub connectors comply with Performance Class 3 (min. 50 contact cycles).

Please contact E-tec first for availability of Performance Class 2 (min. 200 contact cycles) and 1 (min. 500 contact cycles)

D-Sub with Filter (ferrite)

Frequency range	10 - 300 MHz
Impedance	5 MHz - 15 Ω
	25 MHz - 30 Ω
	100 MHz - 50 Ω
	300 MHz - 75 Ω

