

### Ordering Code

**JSR - xxx - X xxx - NN**

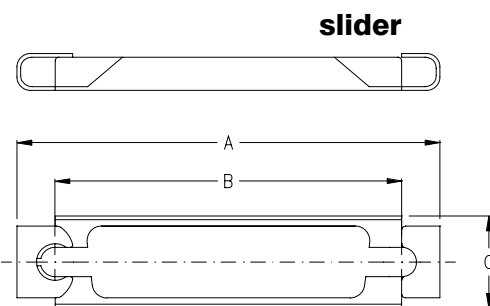
thread combination		thread combi-code
inside	outside	
M 2,6	4-40 UNC	<b>244</b>
2-56 UNC	2-56 UNC	<b>256</b>
M 3	M 3	<b>300</b>
M 3	M 2,6	<b>326</b>
M 3	4-40 UNC	<b>344</b>
4-40 UNC	4-40 UNC	<b>440</b>
4-40 UNC	M 3	<b>443</b>

size type
<b>T 600</b>
<b>T 601</b>
<b>T 602</b> standard type
<b>T 603</b>
<b>T 604</b> for „Low Profile“ D-Sub; Page 8 to 13
<b>T 605</b>
<b>T 607</b> for „press fit“ D-Sub; Page 30
<b>T 609</b>
<b>T 610</b>

*If you order D-Sub connector assembled with Jack screw, T602 type always will be delivered.*

*Jack Screws with other dimension, also round head, are available on request.*

### Slide locking accessories



- A set of slider consists of:
- \* 1 frame
  - \* 2 screws 4-40 UNC
  - \* 2 washers
  - \* 2 nuts 4-40 UNC

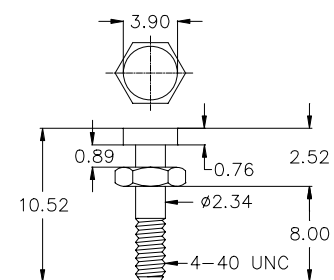
#### Ordering Code

**SLO - xxx - T 106 - NN**

No. of contacts

**009 - 015 - 025** other sizes on request

### locking post



#### Ordering Code

**JLP - 440 - T 106 - NN**

*If you want to have assembled to the D-Sub connector direct, please ask the nearest E-tec office or Distributor*

**Jack Screws and Slide locking accessories are Nickel plated**