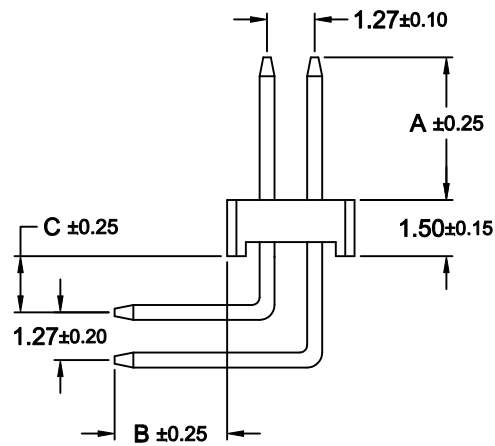
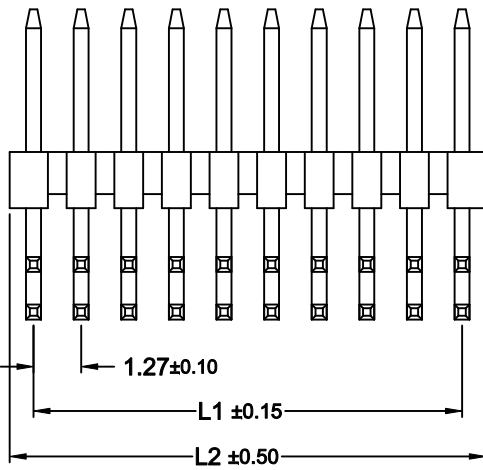
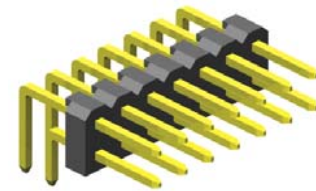
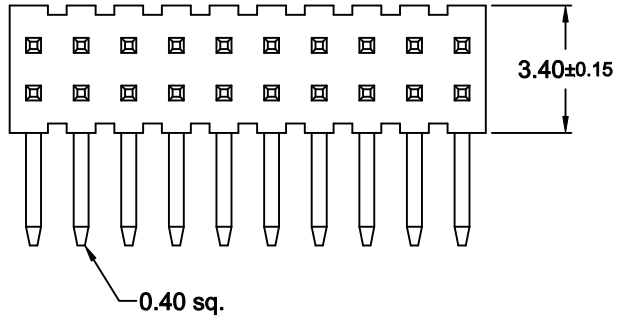


No. of Pin	Dimension(mm)	
	L1	L2
006	2,54	3,81
008	3,81	5,08
010	5,08	6,35
012	6,35	7,62
014	7,62	8,89
016	8,89	10,16
018	10,16	11,43
020	11,43	12,70
022	12,70	13,97
024	13,97	15,24
026	15,24	16,51
028	16,51	17,78
030	17,78	19,05
032	19,05	20,32
034	20,32	21,59
036	21,59	22,86
038	22,86	24,13
040	24,13	25,40
042	25,40	26,67
044	26,67	27,94
046	27,94	29,21
048	29,21	30,48
050	30,48	31,75
052	31,75	33,02
054	33,02	34,29
056	34,29	35,56
058	35,56	36,83
060	36,83	38,10
062	38,10	39,37
064	39,37	40,64
066	40,64	41,91
068	41,91	43,18
070	43,18	44,45
072	44,45	45,72
074	45,72	46,99
076	46,99	48,26
078	48,26	49,53
080	49,53	50,80
082	50,80	52,07
084	52,07	53,34
086	53,34	54,61
088	54,61	55,88
090	55,88	57,15
092	57,15	58,42
094	58,42	59,69
096	59,69	60,96
098	60,96	62,23
100	62,23	63,50



REV.	DESCRIPTION	DRAWN	DATE
A	Release	Lyndon Lin	2008/12/26

Order Code  
**SL2-xxx-R 071/ x-xx/11**

No. of Pin  
006 to 100

Pin Code

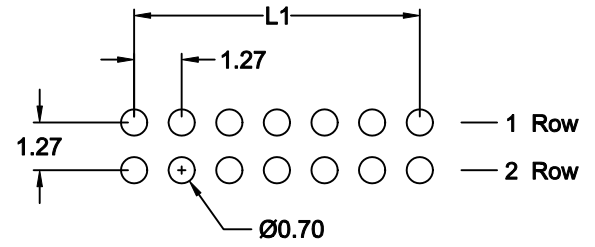
	Dimension (mm)		
	A	B	C
071/0	3,80	3,00	1,50
071/1	4,80	2,50	0,80

Other dimensions on request

- 55 = Gold flash (Standard)
- 66 = 10µ" Gold
- 77 = 15µ" Gold
- 88 = 30µ" Gold
- 99 = Tin
- Duplex plating
- 95 = Tin/Gold flash
- 96 = Tin/10µ" Gold
- 97 = Tin/15µ" Gold
- 98 = Tin/30µ" Gold

**SPECIFICATIONS**

- Current Rating: 1 A
- Insulation Resistance: 1000MΩ min.
- Contact Resistance: 20mΩ max.
- Dielectric Withstanding: AC 500V/Minute
- Operating Temperature: -40°C ~ +105°C
- Contact Material: Brass
- Insulator Material: Nylon 6T black UL 94V-0
- Plating: Gold, Tin or Duplex
- \*Duplex: Gold on contact, Tin on solder area



Recommended PCB Hole Layout  
(PCB TOLERANCE ±0.05)



UNIT	SCALE	GENERAL TOLERANCE
mm	Free	X.° ± 3° .X° ±
		X. ± .X0 ± 0.38
		XX. ± .XX ± 0.25
		XXX. ± .XXX ±

DRAWN	DATE	DWG. NO.	SHEET
Lyndon Lin	Dec 26 2008	SL2-R071/x	1/1
CHECK	DATE	PART NO.	REV.
Lyndon Lin	Dec 26 2008	SL2-xxx-R071/x-xx/11	A
APPROVE	DATE		
HOGI	March 23 2009		

**1.27mm Pitch Pin Header**  
**-THT- Right Angle Dual Row**  
**"Down Angle Type"**