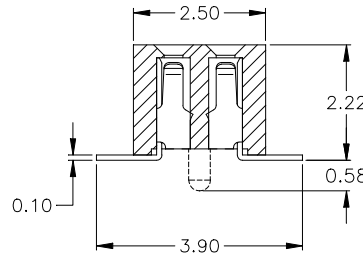
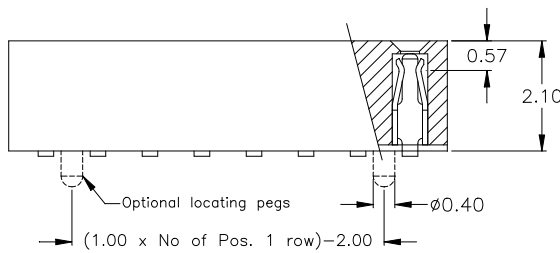
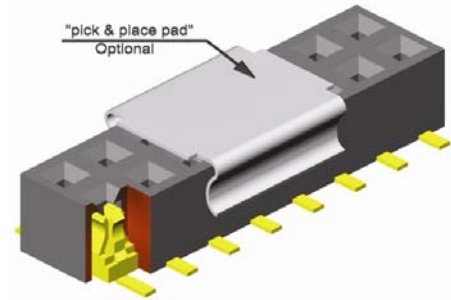
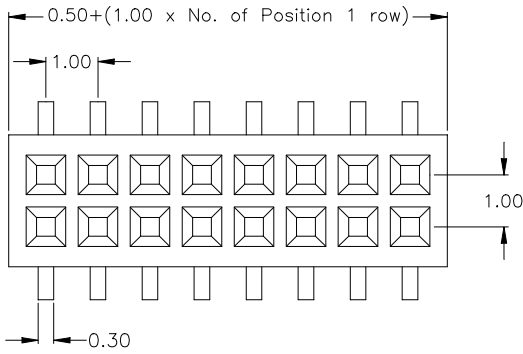


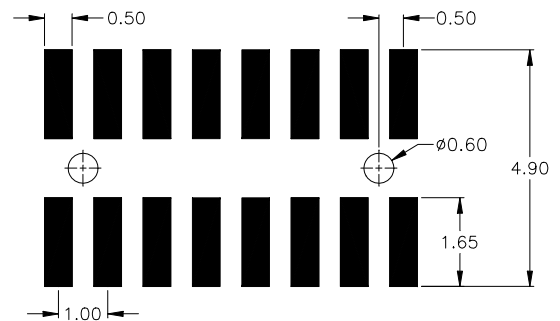
1.00mm pitch Female Header
 - SMT - low profile dual row



APPLICATION AND FEATURES

- **Standard: tube packing, without locating pegs and without pick & place pad**
- Assures reliable PC Board connections
- Fine pitch, low profile for space saving Application
- Accept 0,30mm square Pin Header on page 11

P C B Surface Mount Layout



SPECIFICATIONS

Current rating	1 A
Insulator resistance	5000 MΩ min.
Contact resistance	20 mΩ max.
Dielectric withstanding	500 V AC

Operating temperature	- 40°C to +105°C
Processing temperature	+250°C +0/-5°C for 20~40sec.
Contact material	(RoHS compliant) Phosphor Bronze
Insulator material	(RoHS compliant) LCP UL 94 V-0

How to order

BS2 - xxx - H222 - 55 /00 X

Nbr of contacts	
without "locating pegs"	004 to 080
with "locating pegs"	008 to 080

Plating	
55	= gold
other platings on request	

Packing and "pick & place pad" Option	
without "locating pegs"	
A	= tube packing and pick & place pad
B	= reel packing and pick & place pad
with "locating pegs"	
C	= locating pegs; tube packing (no pick & place pad)
D	= locating pegs; tube packing; pick & place pad
E	= locating pegs; reel packing; pick & place pad